

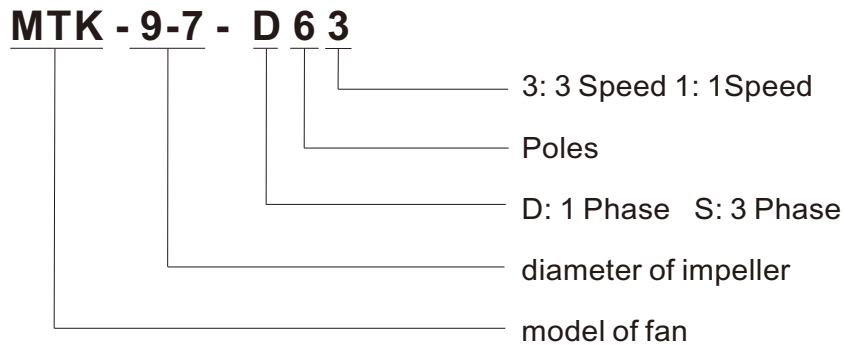


MTK Series
DWDI, Forward Blades
Direct Driven
CENTRIFUGAL FAN





Designation of Products



Technical specification

MTK series air condition fan adopts double suction forward curved impellers, belongs to metric and British system middle-low pressure forward air condition fan series.

Whist, energy-saving, little volume, convenient installation, can be used in workshop, plant, hotel, large market, building for ventilation, collocate using with Central air condition set, purify equipment, end of air conditioner etc.

Motor adopts direct driving, can reduce noise, to ensure steady long-term operating. The speed of single phase motor can be changed, so it can meet many different requirements of customers.

Impeller adopts forward curved multi-blades, balance precision is G4.0

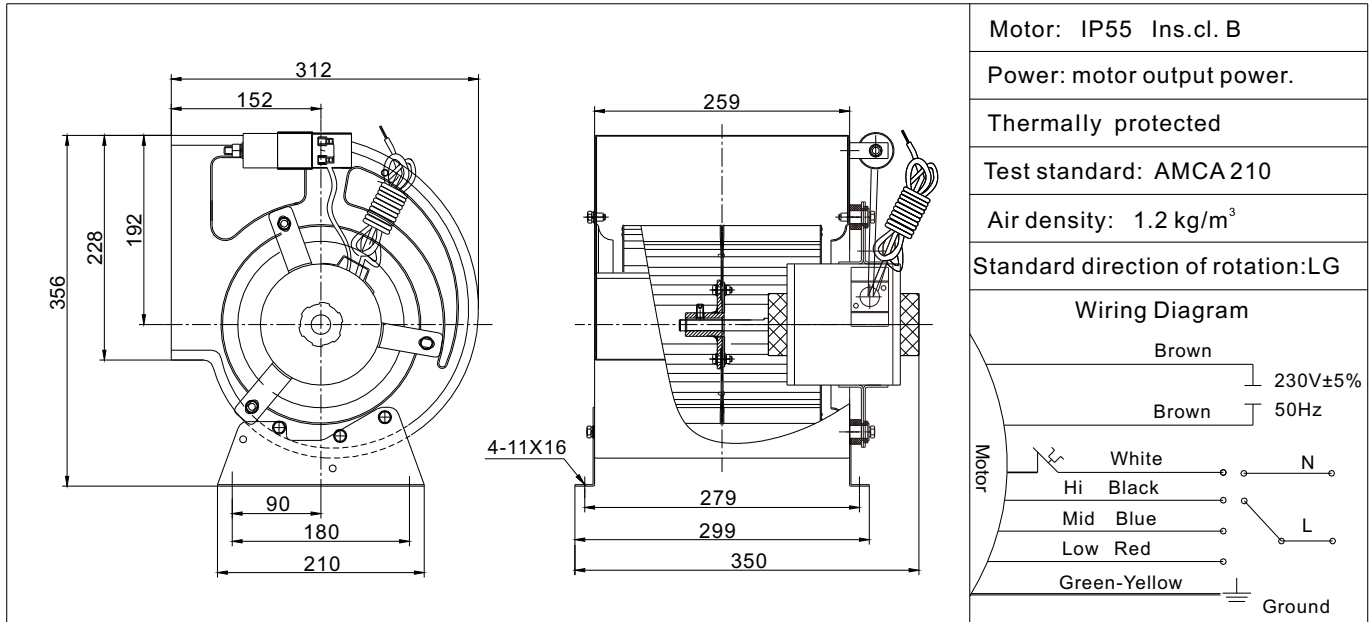
All parts use galvanized steel as material, it's anticorrosive.

Prohibit to fully open inlet when operating, to avoid motor damage caused by overload.

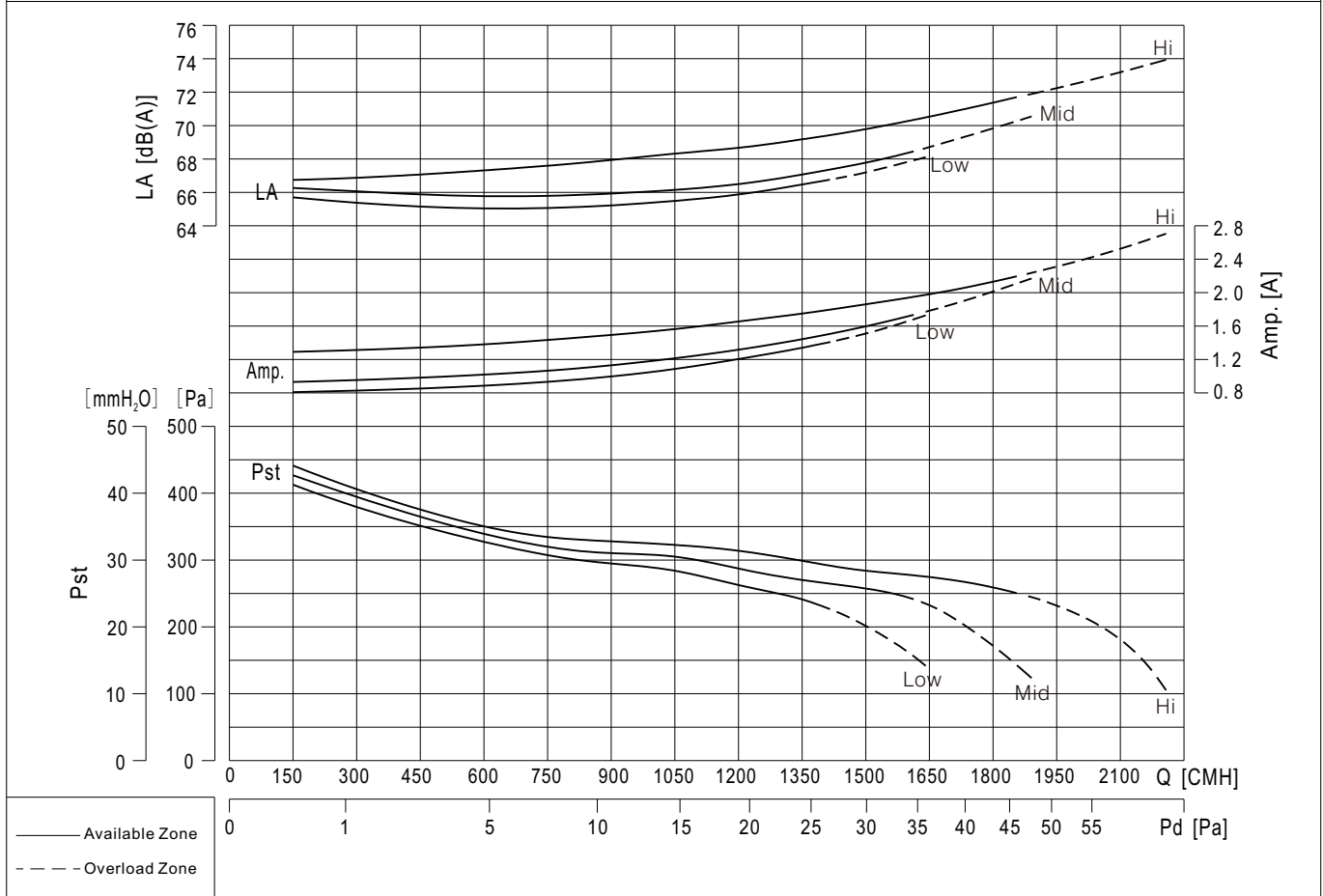
It operated in environment with on inflammable, explosive, erosive air, solid grain contained below $100\text{mg}/\text{m}^3$, and air temperature is between $-10^{\circ}\text{C}\sim 40^{\circ}\text{C}$.

Performance of MTK Fans are not licensed by AMCA International.

MTK7-7-D43



Hi. speed	Speed	1370 r/min	Power	280 W	Amp.	2.0 A	
Mid. speed	Speed	1260 r/min	Power	200 W	Amp.	1.7 A	
Low speed	Speed	1160 r/min	Power	160 W	Amp.	1.4 A	
Capacitor		12 μ F /450V	Voltage		230V \pm 5% / 50Hz	Weight	9 kg



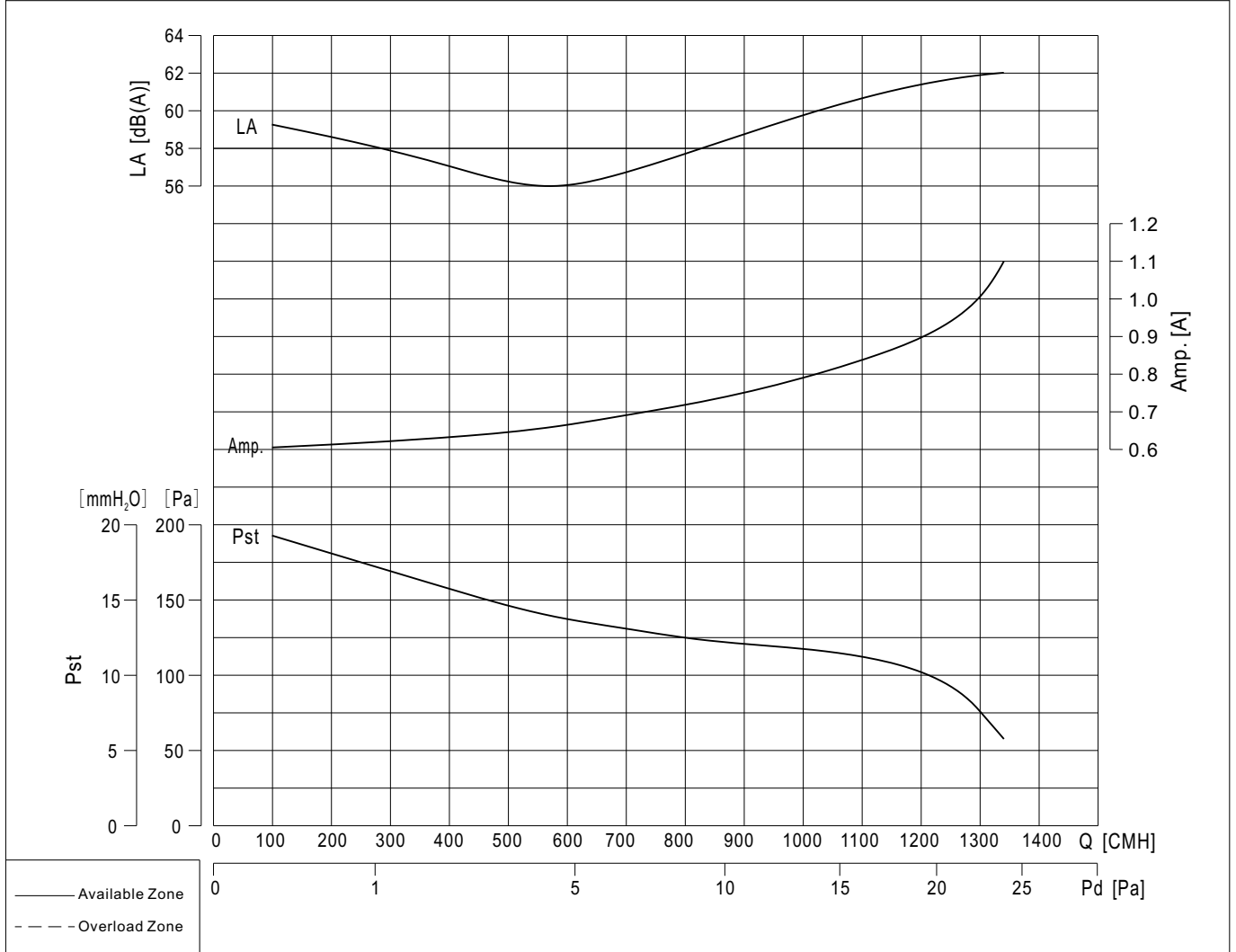


MTK7-7-D61

	Motor: IP55 Ins.cl. B
	Power: motor output power.
	Thermally protected
	Test standard: AMCA 210
	Air density: 1.2 kg/m ³
	Standard direction of rotation: LG
	Wiring Diagram

Speed	880 r/min	Power	130 W	Amp.	1.1 A
-------	-----------	-------	-------	------	-------

Capacitor	5μF /450V	Voltage	230V±5% / 50Hz	Weight	9 kg
-----------	-----------	---------	----------------	--------	------

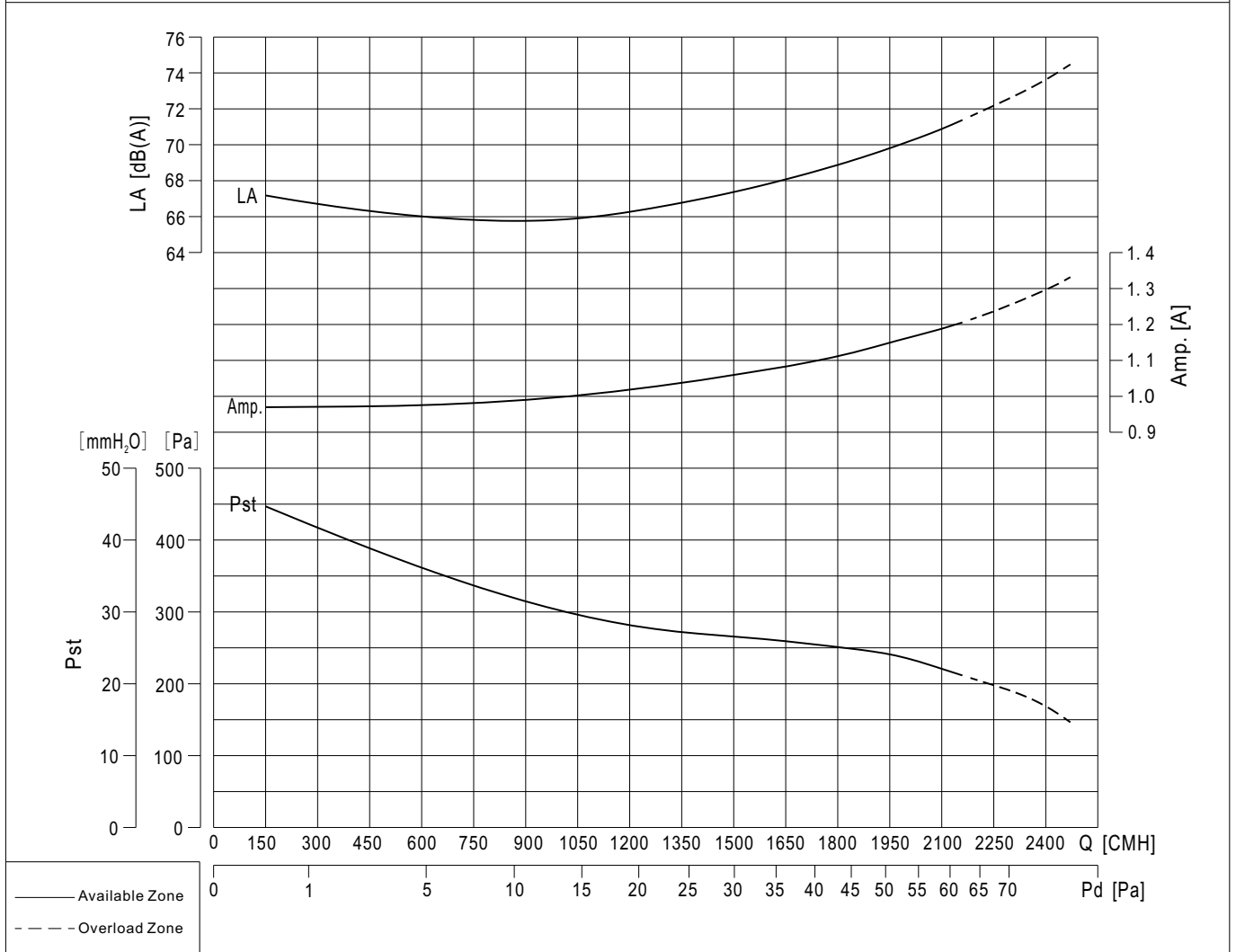


MTK7-7-S41

	<p>Motor: IP55 Ins.cl. B</p> <p>Power: motor output power.</p> <p>Test standard: AMCA 210</p> <p>Air density: 1.2 kg/m³</p> <p>Standard direction of rotation: LG</p> <p style="text-align: center;">Wiring Diagram</p>
--	--

Speed	1330 r/min	Power	330 W	Amp.	1.1 A
-------	------------	-------	-------	------	-------

Voltage	380V±5% / 50Hz	Weight	8.5 kg
---------	----------------	--------	--------



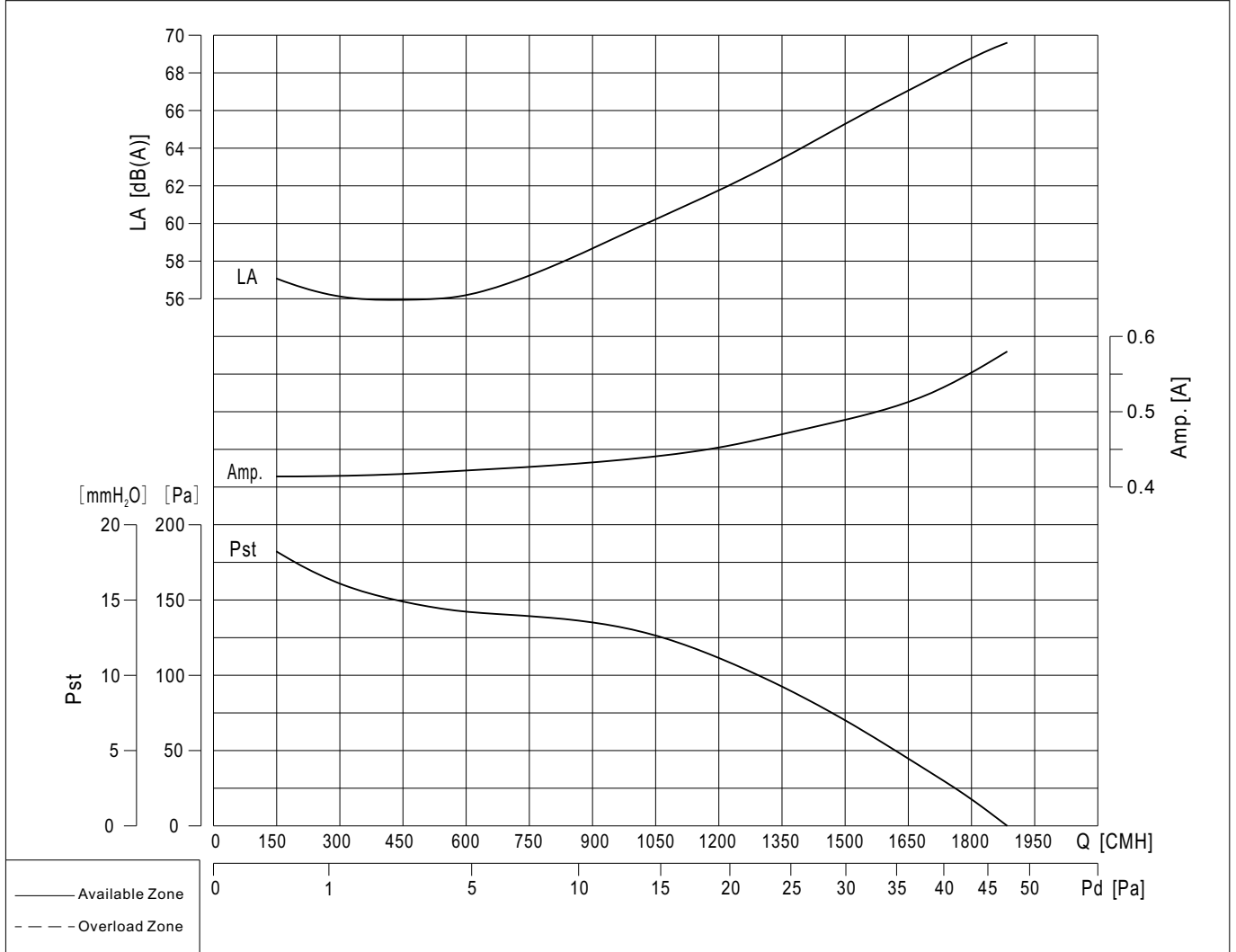


MTK7-7-S61

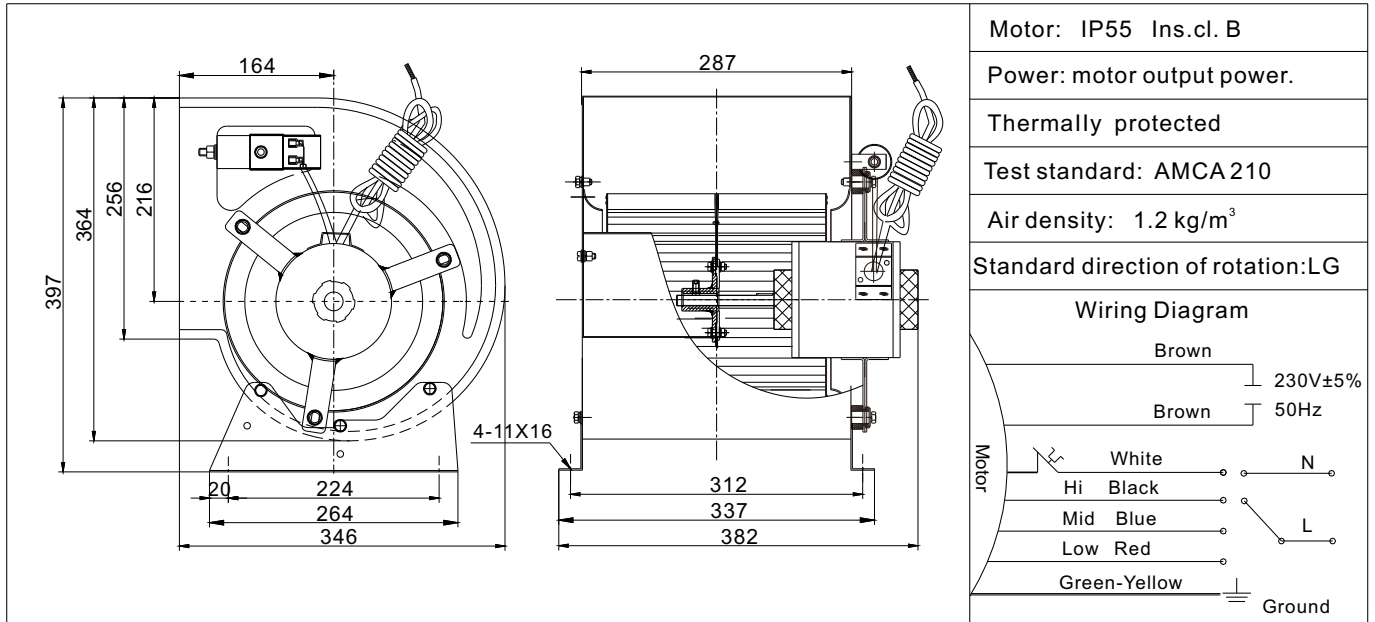
	Motor: IP55 Ins.cl. B
	Power: motor output power.
	Test standard: AMCA 210
	Air density: 1.2 kg/m ³
	Standard direction of rotation: LG
	<p>Wiring Diagram</p>

Speed	900 r/min	Power	130 W	Amp.	0.6 A
-------	-----------	-------	-------	------	-------

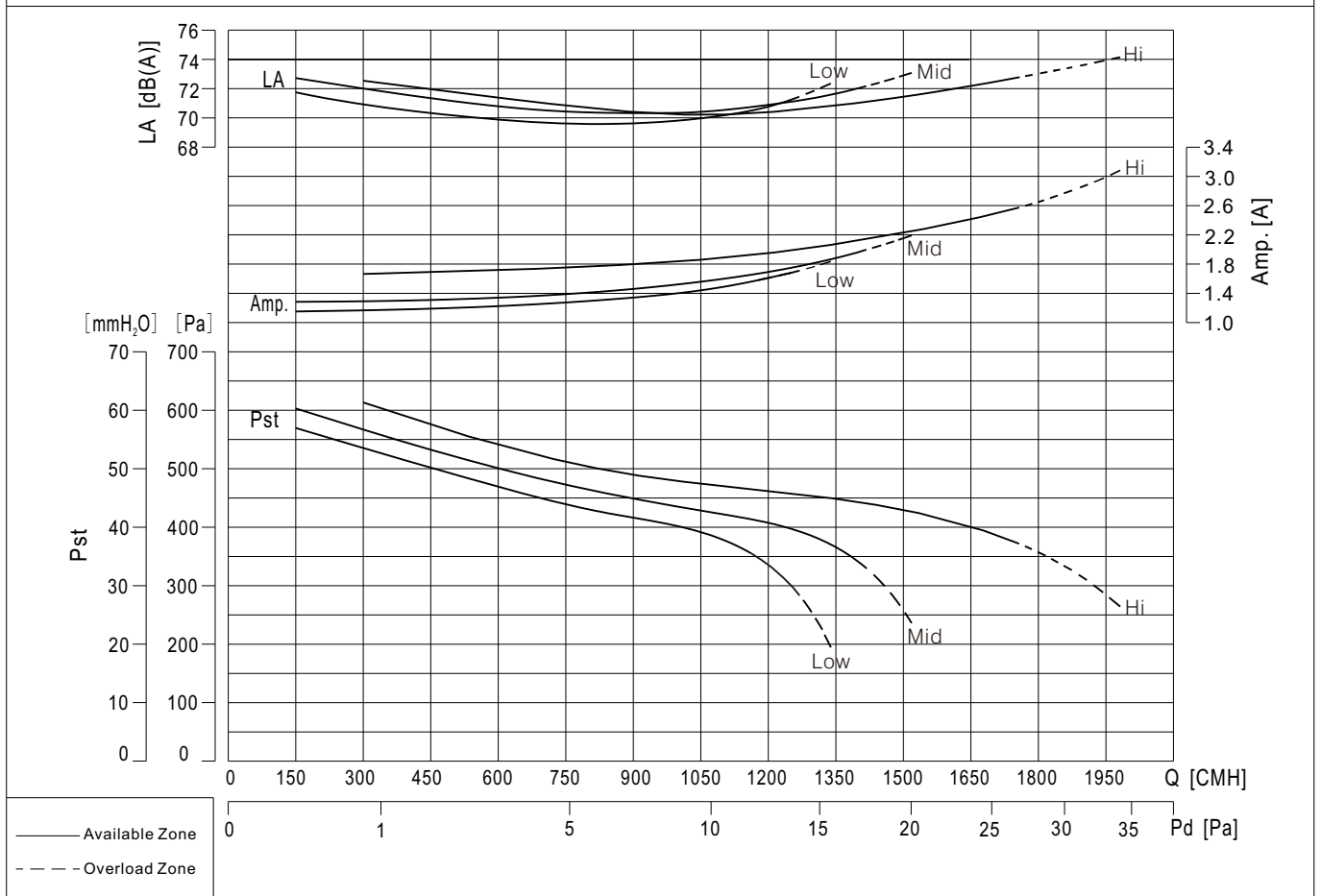
Voltage	380V±5% / 50Hz	Weight	8.5 kg
---------	----------------	--------	--------



MTK8-8-D43



Hi. speed	Speed	1350 r/min	Power	300 W	Amp.	2.5 A	
Mid. speed	Speed	1260 r/min	Power	220 W	Amp.	2.0 A	
Low speed	Speed	1080 r/min	Power	180 W	Amp.	1.7 A	
Capacitor		12 μ F /450V	Voltage		230V \pm 5% / 50Hz	Weight	12.5 kg





MTK8-8-D61

Motor: IP55 Ins.cl. B

Power: motor output power.

Thermally protected

Test standard: AMCA 210

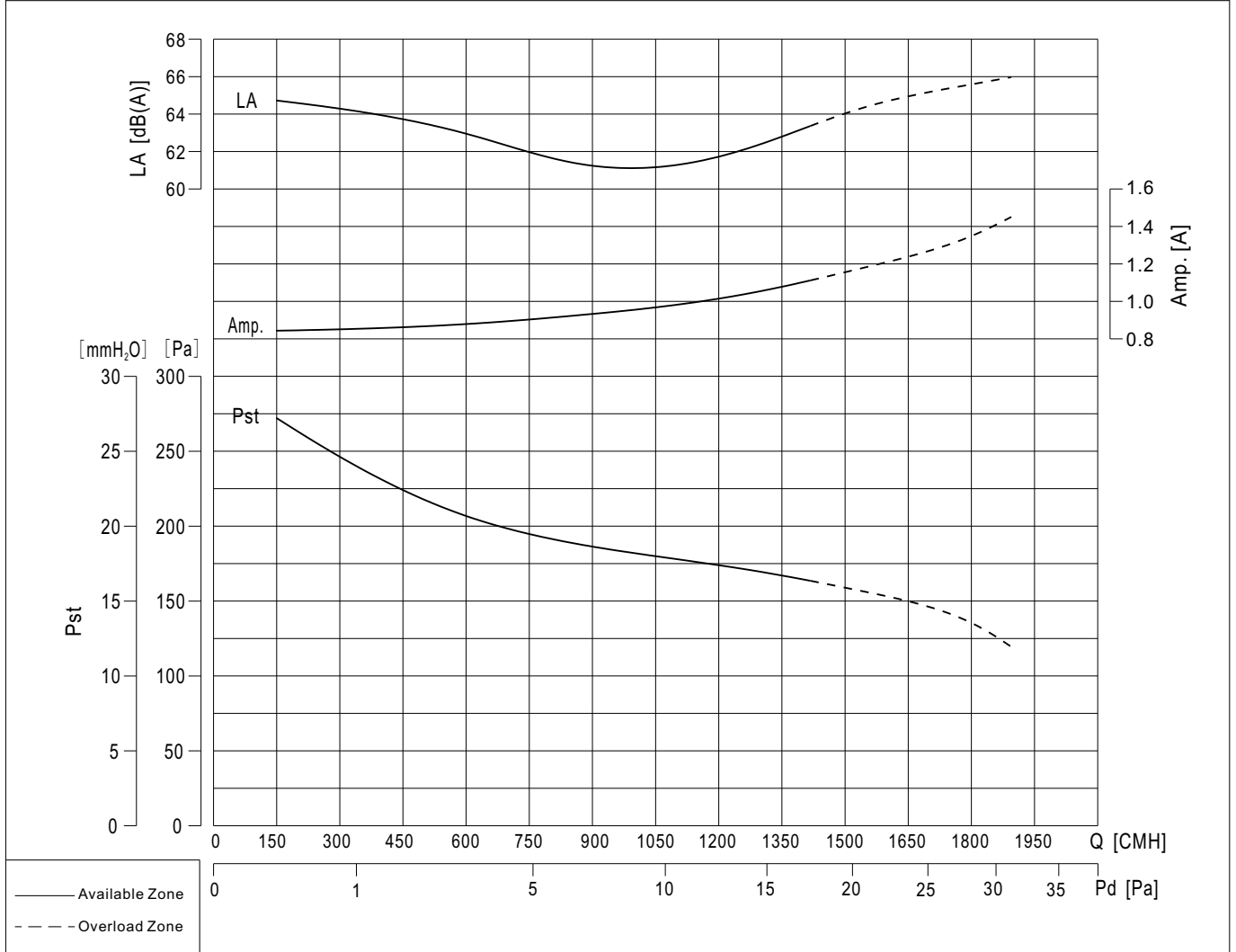
Air density: 1.2 kg/m³

Standard direction of rotation: LG

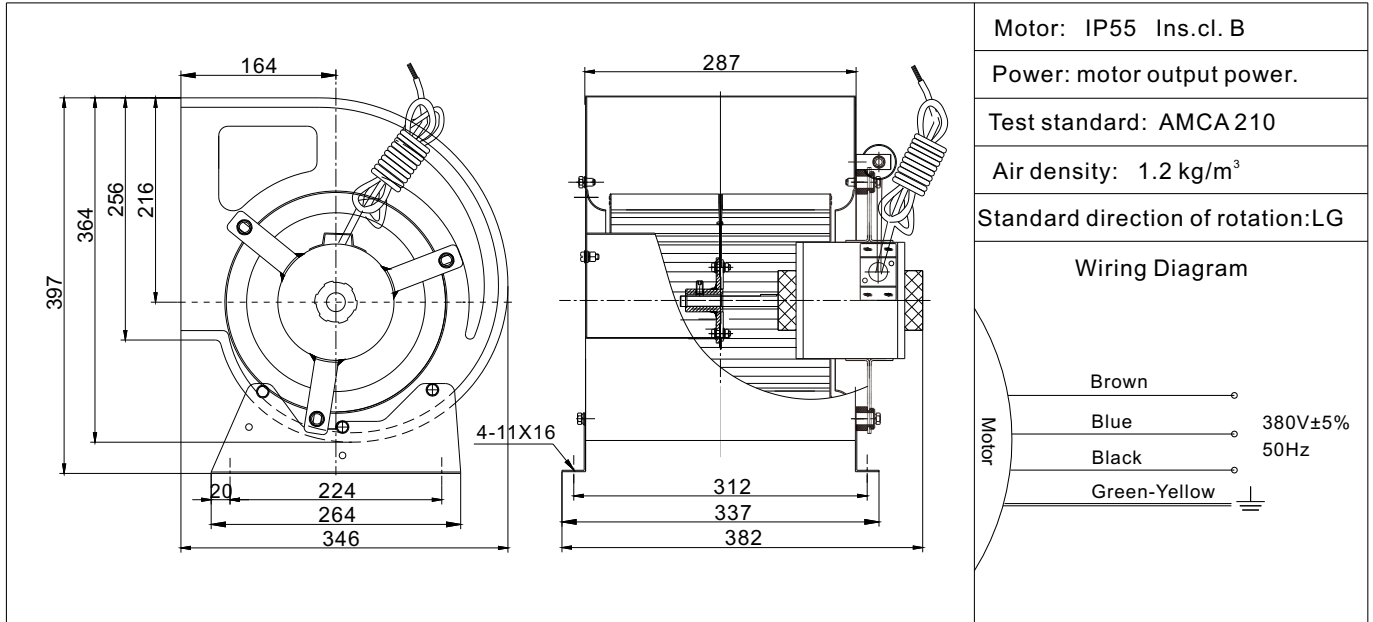
Wiring Diagram

Speed	900 r/min	Power	130 W	Amp.	1.1 A
-------	-----------	-------	-------	------	-------

Capacitor	6μF /450V	Voltage	230V±5% / 50Hz	Weight	12.5 kg
-----------	-----------	---------	----------------	--------	---------

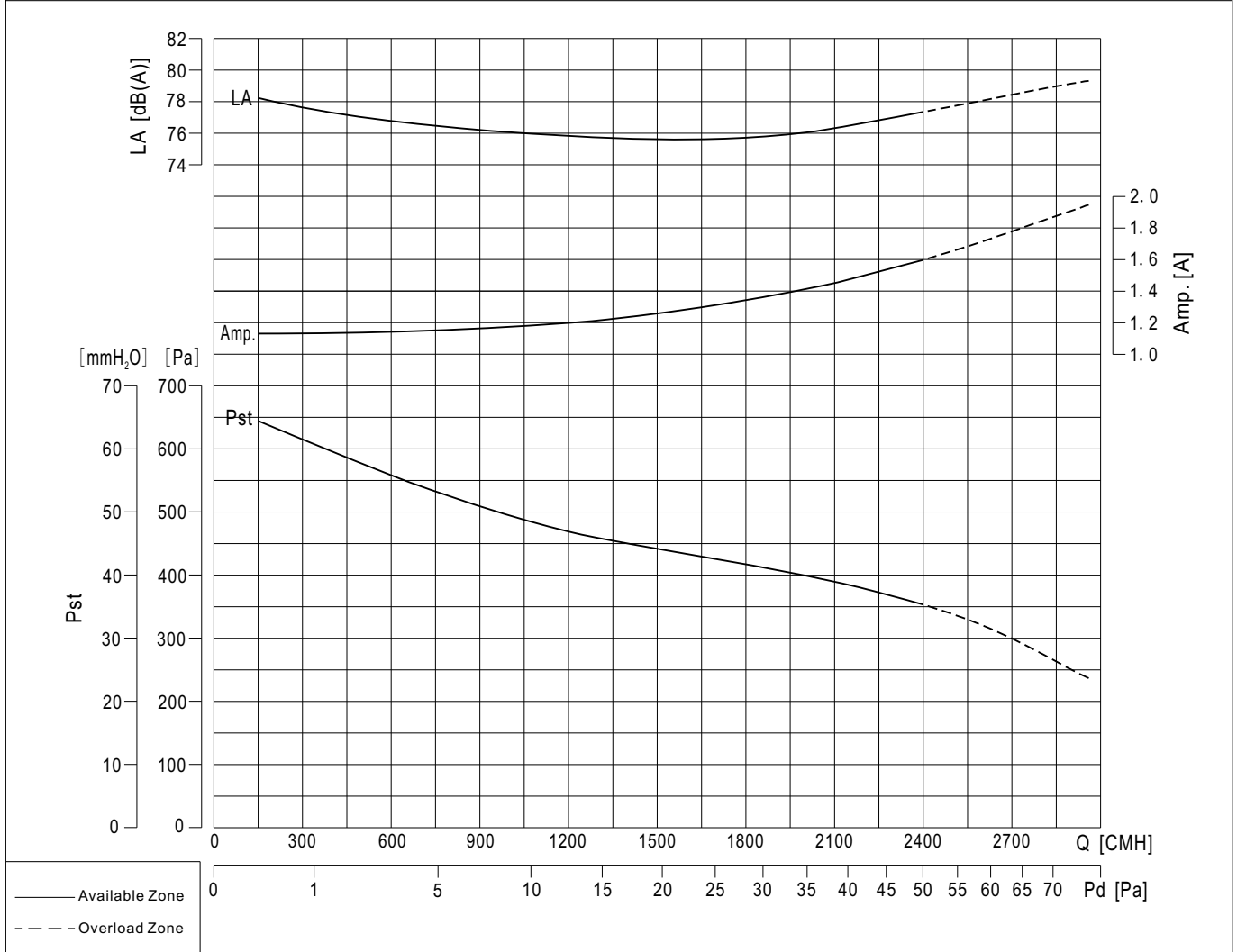


MTK8-8-S41



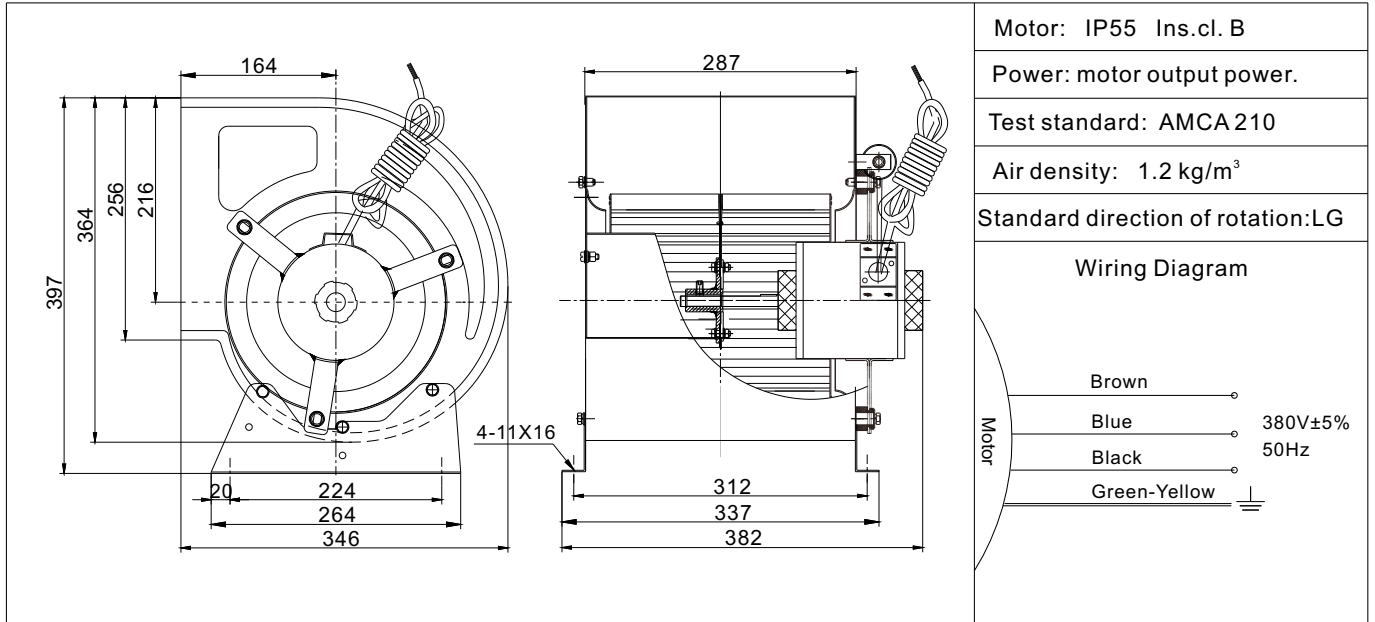
Speed	1340 r/min	Power	350 W	Amp.	1.6 A
-------	------------	-------	-------	------	-------

Voltage	380V±5% / 50Hz	Weight	12 kg
---------	----------------	--------	-------



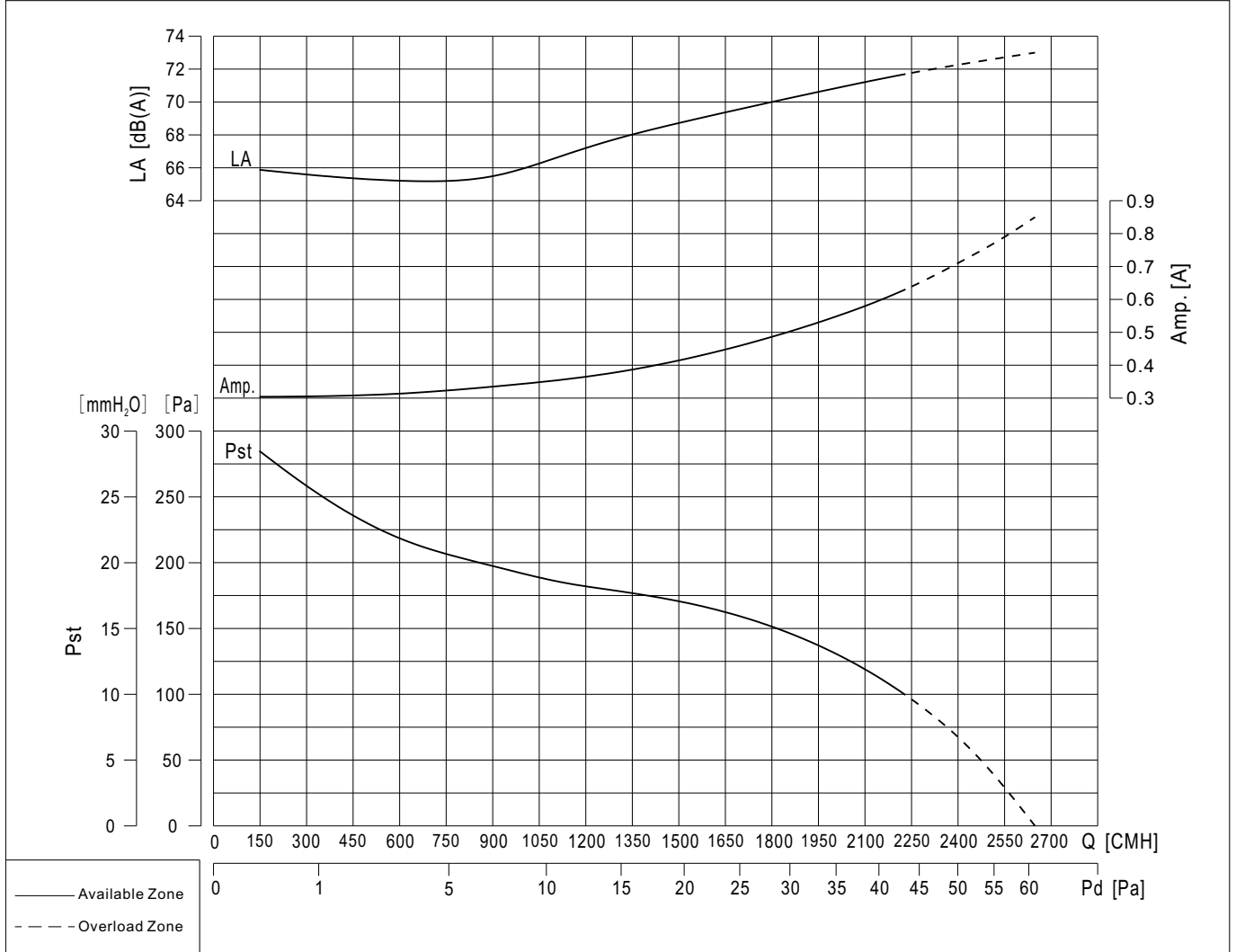


MTK8-8-S61



Speed	900 r/min	Power	150 W	Amp.	0.63 A
-------	-----------	-------	-------	------	--------

Voltage	380V±5% / 50Hz	Weight	12 kg
---------	----------------	--------	-------



MTK9-7-D43

Motor: IP55 Ins.cl. B

Power: motor output power.

Thermally protected

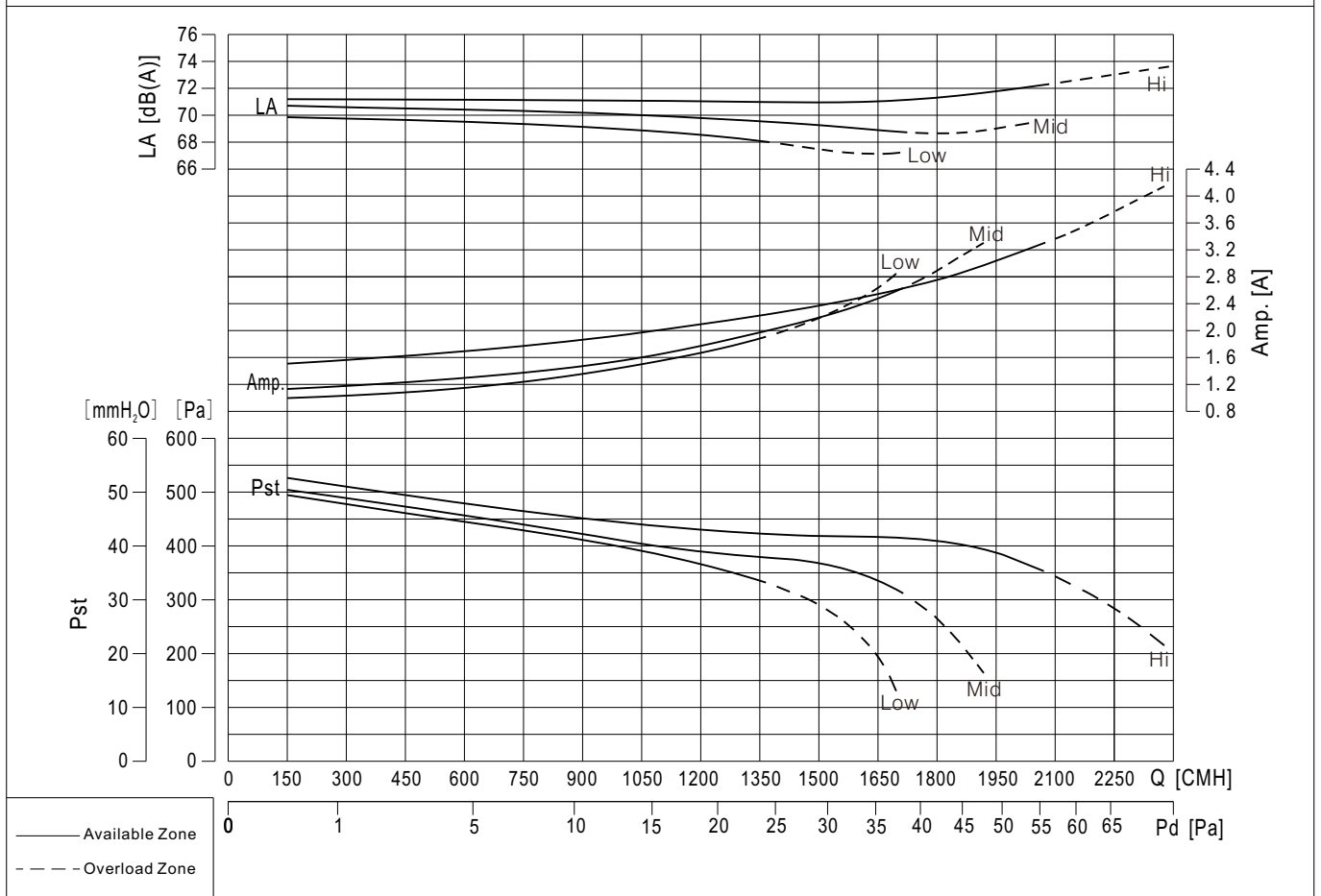
Test standard: AMCA 210

Air density: 1.2 kg/m³

Standard direction of rotation: LG

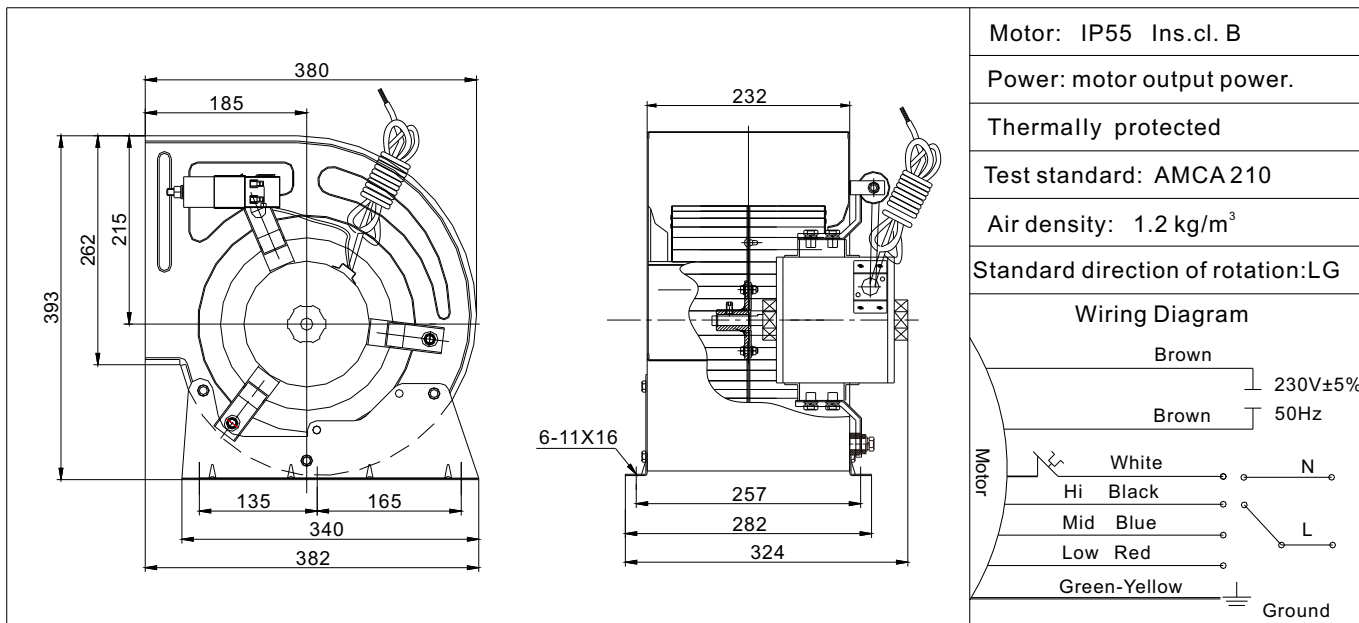
Wiring Diagram

Hi. speed	Speed	1330 r/min	Power	380 W	Amp.	3.2A	
Mid. speed	Speed	1260 r/min	Power	300 W	Amp.	2.2 A	
Low speed	Speed	1080 r/min	Power	220 W	Amp.	1.9 A	
Capacitor		12µF /450V	Voltage		230V±5% / 50Hz	Weight	14.5 kg

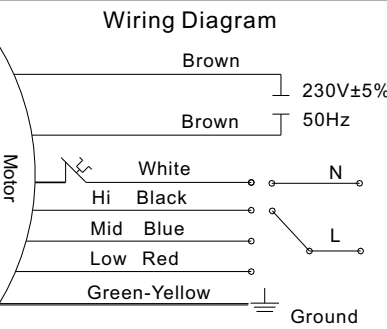




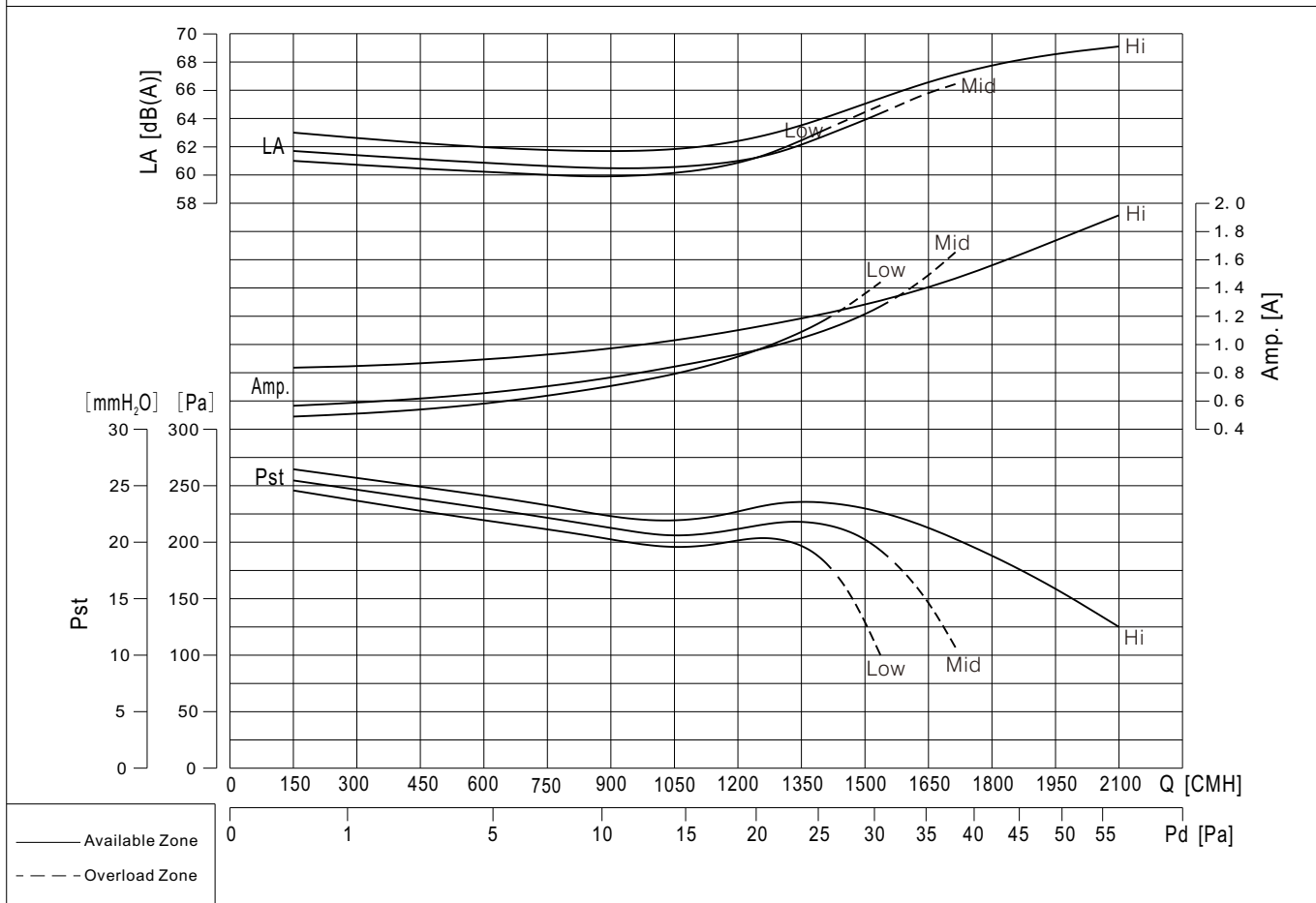
MTK9-7-D63



Motor: IP55 Ins.cl. B
 Power: motor output power.
 Thermally protected
 Test standard: AMCA 210
 Air density: 1.2 kg/m³
 Standard direction of rotation: LG



Hi. speed	Speed	890 r/min	Power	180 W	Amp.	1.9 A	
Mid. speed	Speed	830 r/min	Power	130 W	Amp.	1.3 A	
Low speed	Speed	770 r/min	Power	120 W	Amp.	1.2 A	
Capacitor		10μF /450V	Voltage		230V±5% / 50Hz	Weight	14.5 kg



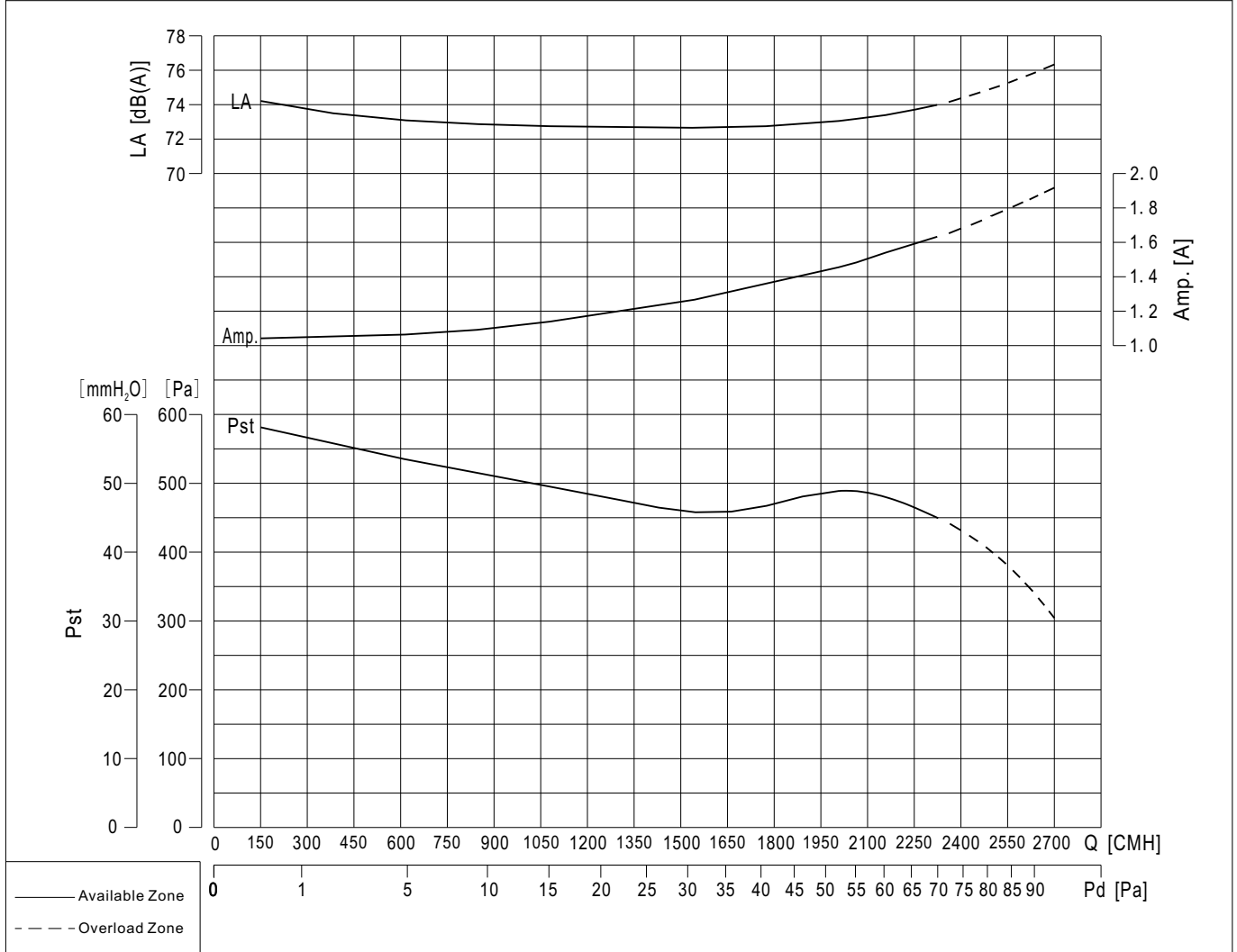
MTK Series

MTK9-7-S41

	Motor: IP55 Ins.cl. B
	Power: motor output power.
	Test standard: AMCA 210
	Air density: 1.2 kg/m ³
	Standard direction of rotation: LG
	<p>Wiring Diagram</p>

Speed	1350 r/min	Power	380 W	Amp.	1.6 A
-------	------------	-------	-------	------	-------

Voltage	380V±5% / 50Hz	Weight	14.5 kg
---------	----------------	--------	---------



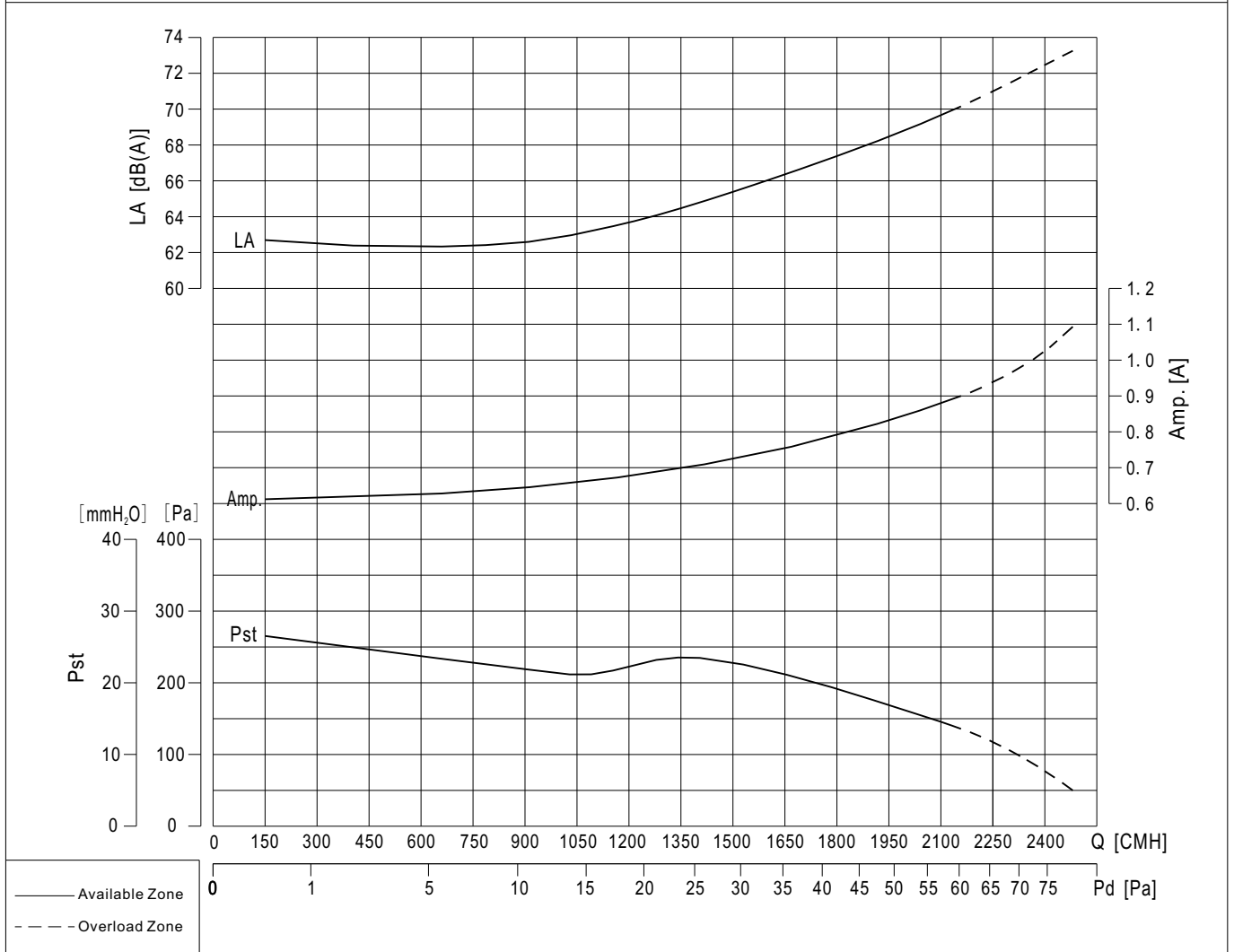


MTK9-7-S61

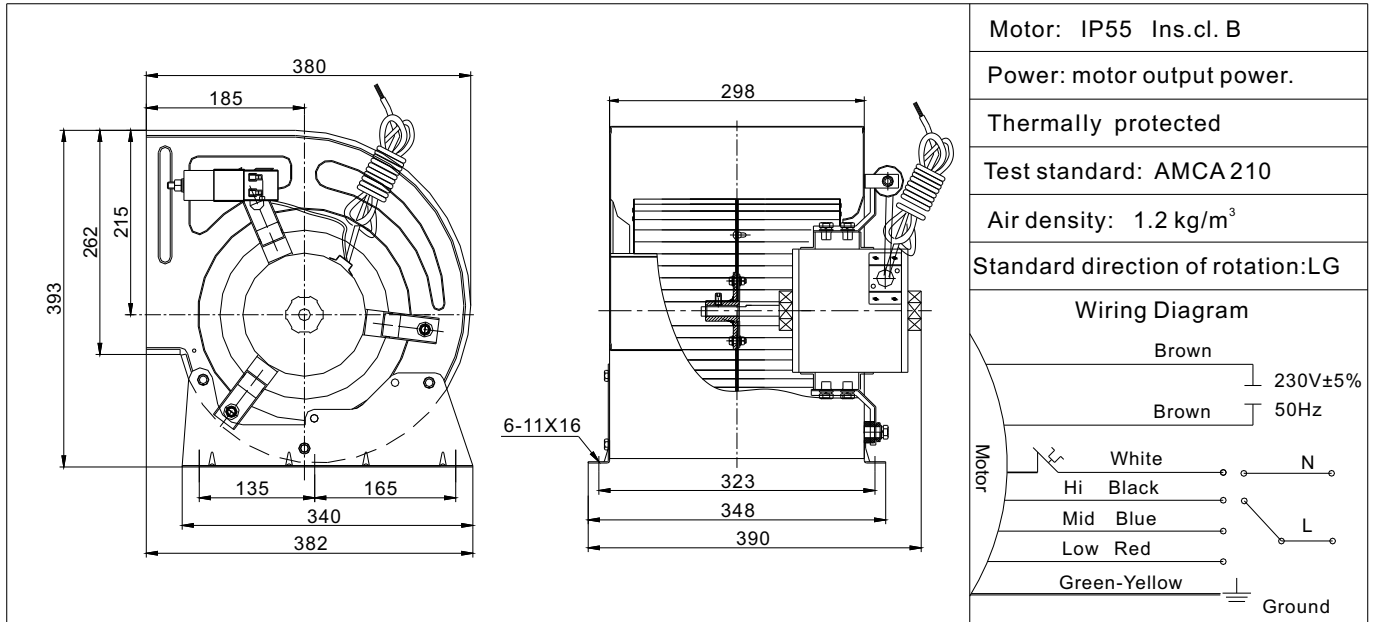
	Motor: IP55 Ins.cl. B
	Power: motor output power.
	Test standard: AMCA 210
	Air density: 1.2 kg/m ³
	Standard direction of rotation: LG
	<p>Wiring Diagram</p>

Speed	880 r/min	Power	200 W	Amp.	0.9 A
-------	-----------	-------	-------	------	-------

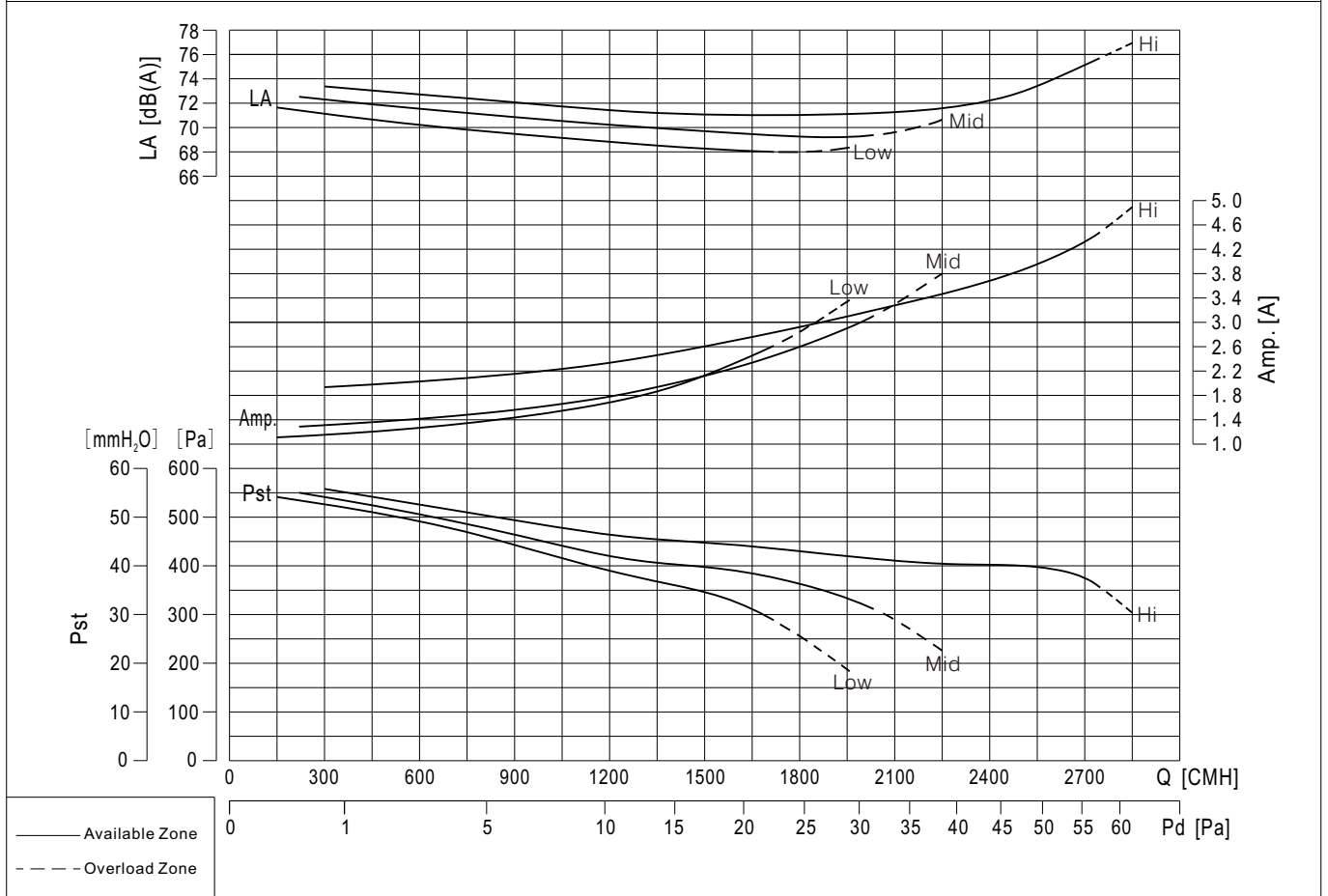
Voltage	380V±5% / 50Hz	Weight	14.5 kg
---------	----------------	--------	---------



MTK9-9-D43

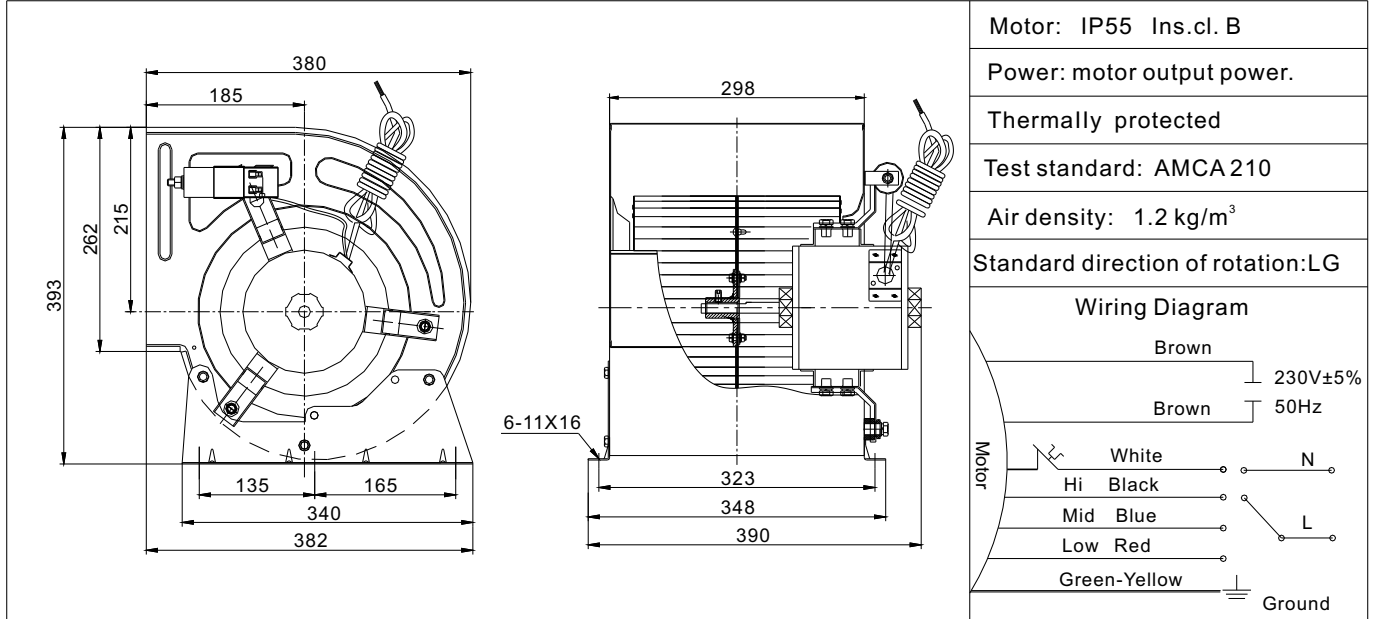


Hi. speed	Speed	1360 r/min	Power	550 W	Amp.	4.5 A
Mid. speed	Speed	1260 r/min	Power	380 W	Amp.	3.0 A
Low speed	Speed	1180 r/min	Power	260 W	Amp.	2.5 A
Capacitor		16 μ F /450V		Voltage	230V \pm 5% / 50Hz	
			Weight	16.5 kg		

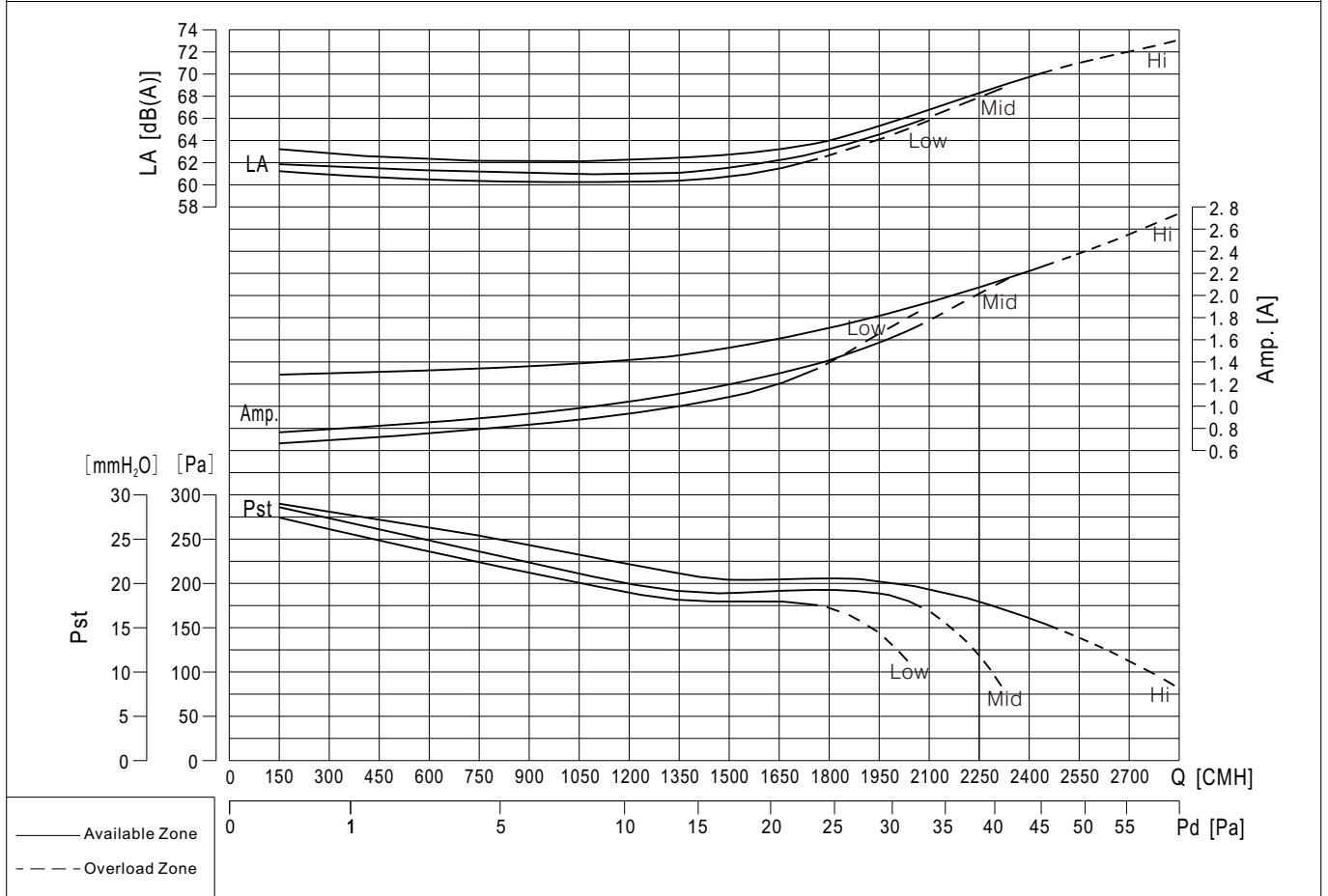




MTK9-9-D63



Hi. speed	Speed	890 r/min	Power	200 W	Amp.	2.2 A	
Mid. speed	Speed	810 r/min	Power	150 W	Amp.	1.6 A	
Low speed	Speed	750 r/min	Power	130 W	Amp.	1.3 A	
Capacitor		10 μ F /450V	Voltage		230V \pm 5% / 50Hz	Weight	16.5 kg



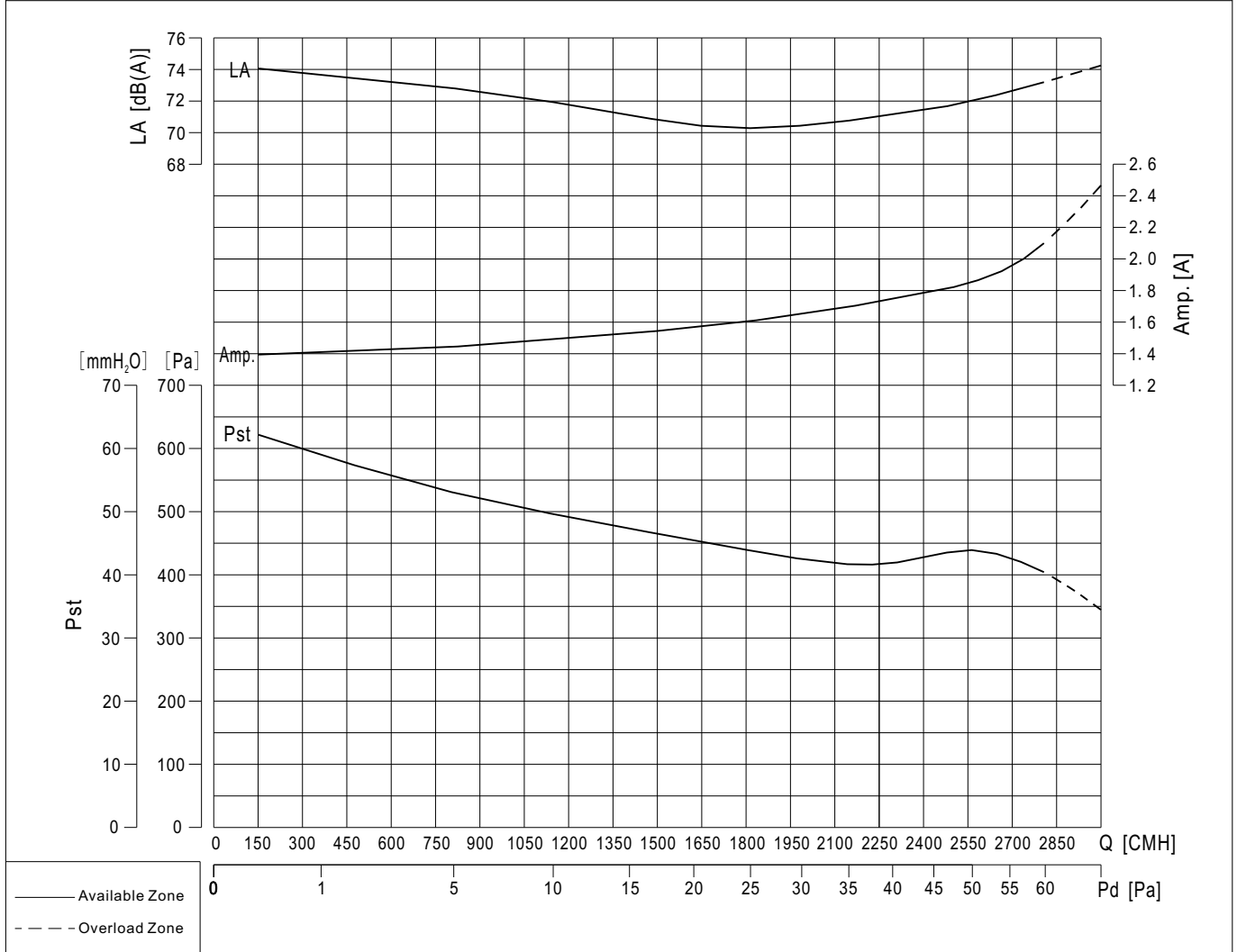
MTK Series

MTK9-9-S41

	Motor: IP55 Ins.cl. B
	Power: motor output power.
	Test standard: AMCA 210
	Air density: 1.2 kg/m ³
	Standard direction of rotation: LG
	<p>Wiring Diagram</p>

Speed	1330 r/min	Power	550 W	Amp.	2.0 A
-------	------------	-------	-------	------	-------

Voltage	380V±5% / 50Hz	Weight	16.5 kg
---------	----------------	--------	---------



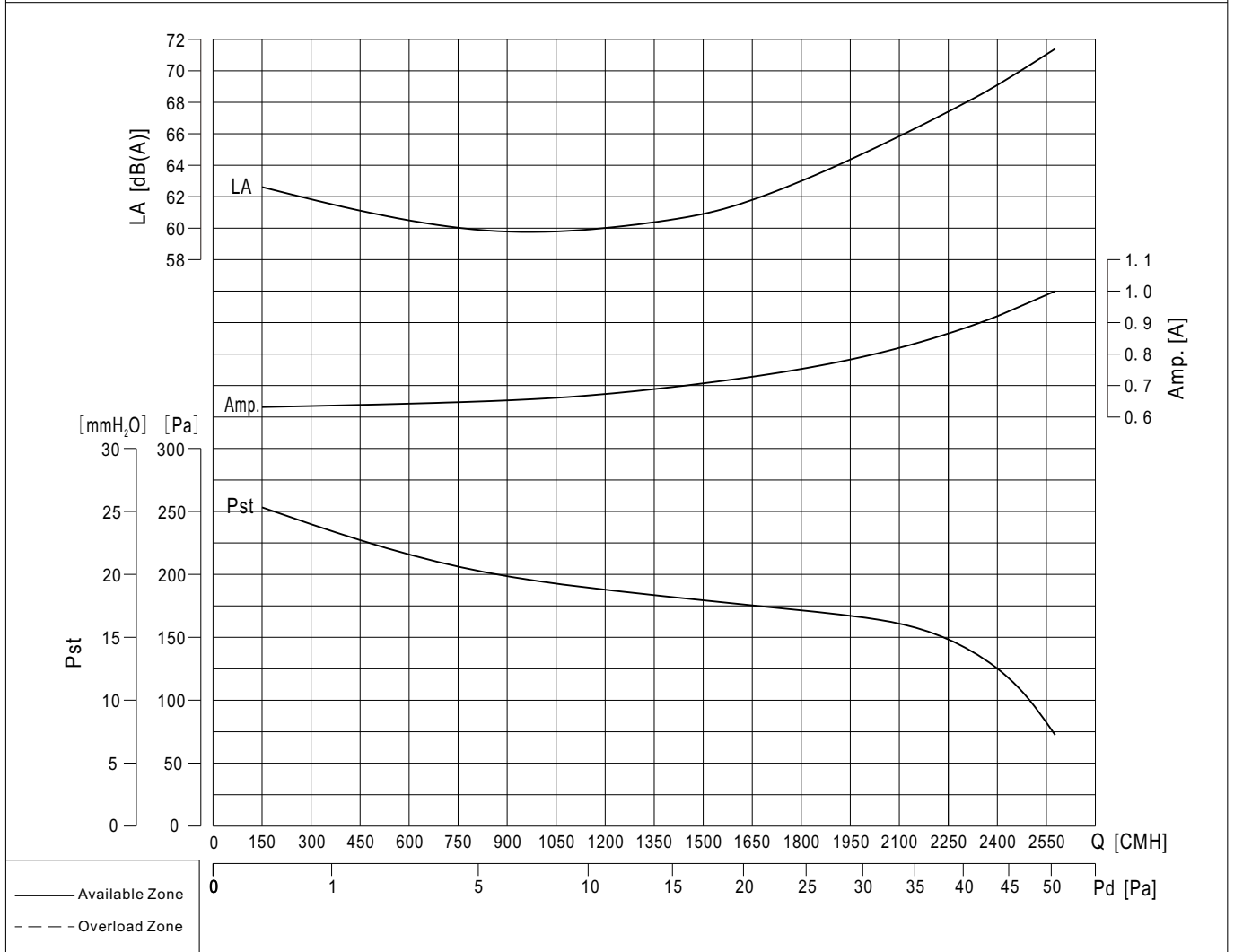


MTK9-9-S61

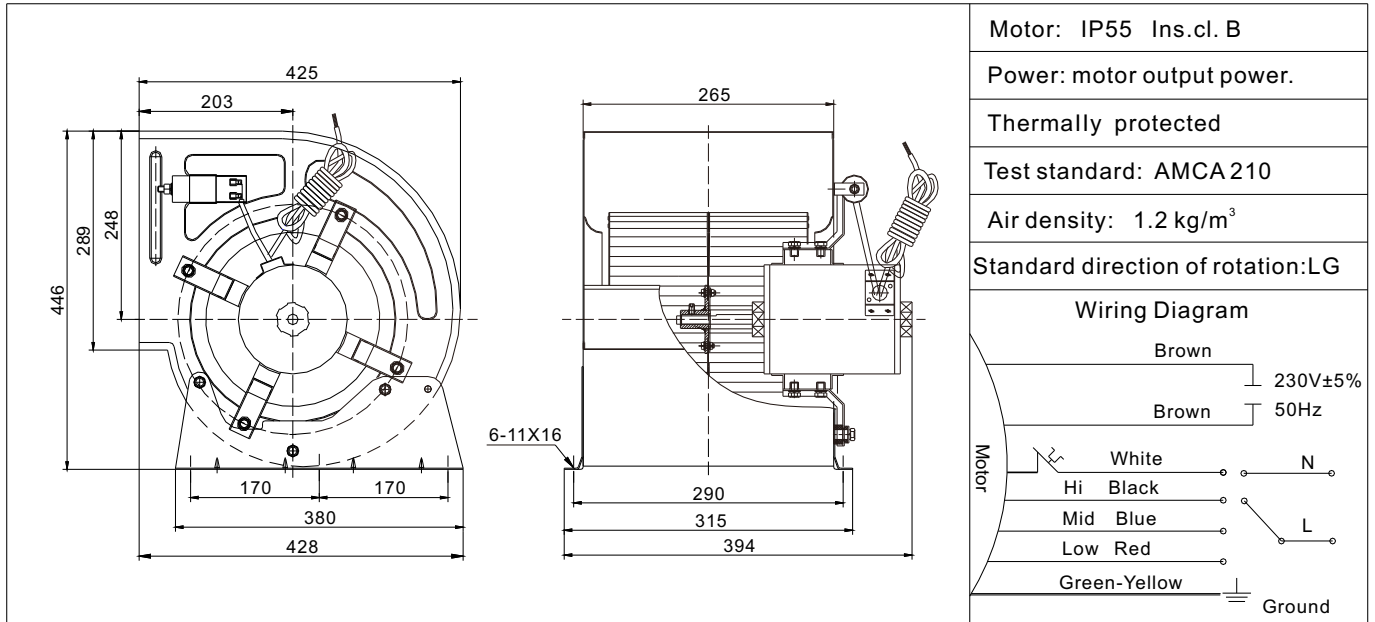
	Motor: IP55 Ins.cl. B
	Power: motor output power.
	Test standard: AMCA 210
	Air density: 1.2 kg/m ³
	Standard direction of rotation: LG
	<p>Wiring Diagram</p>

Speed	850 r/min	Power	210 W	Amp.	1.0 A
-------	-----------	-------	-------	------	-------

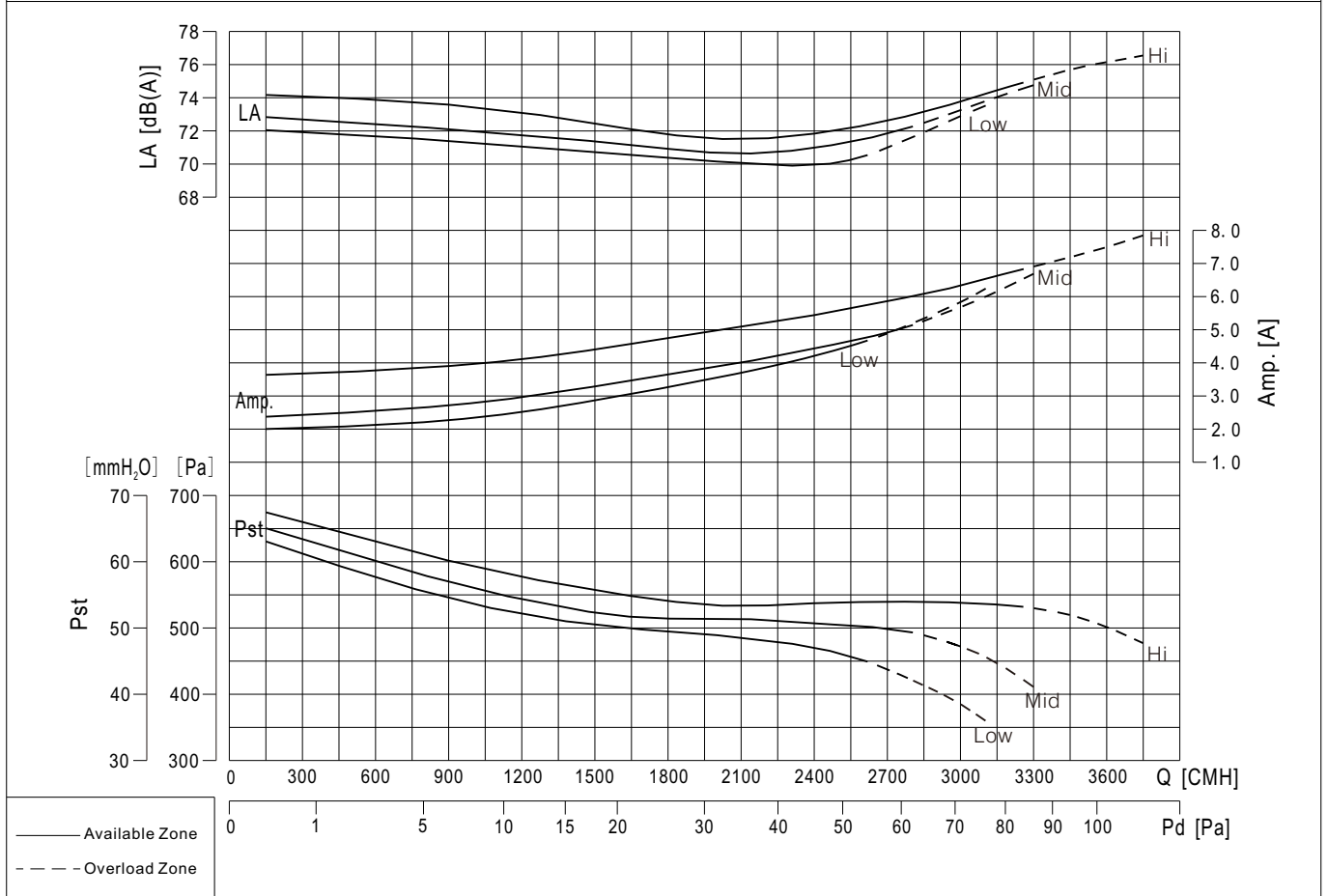
Voltage	380V±5% / 50Hz	Weight	16.5 kg
---------	----------------	--------	---------



MTK10-8-D43

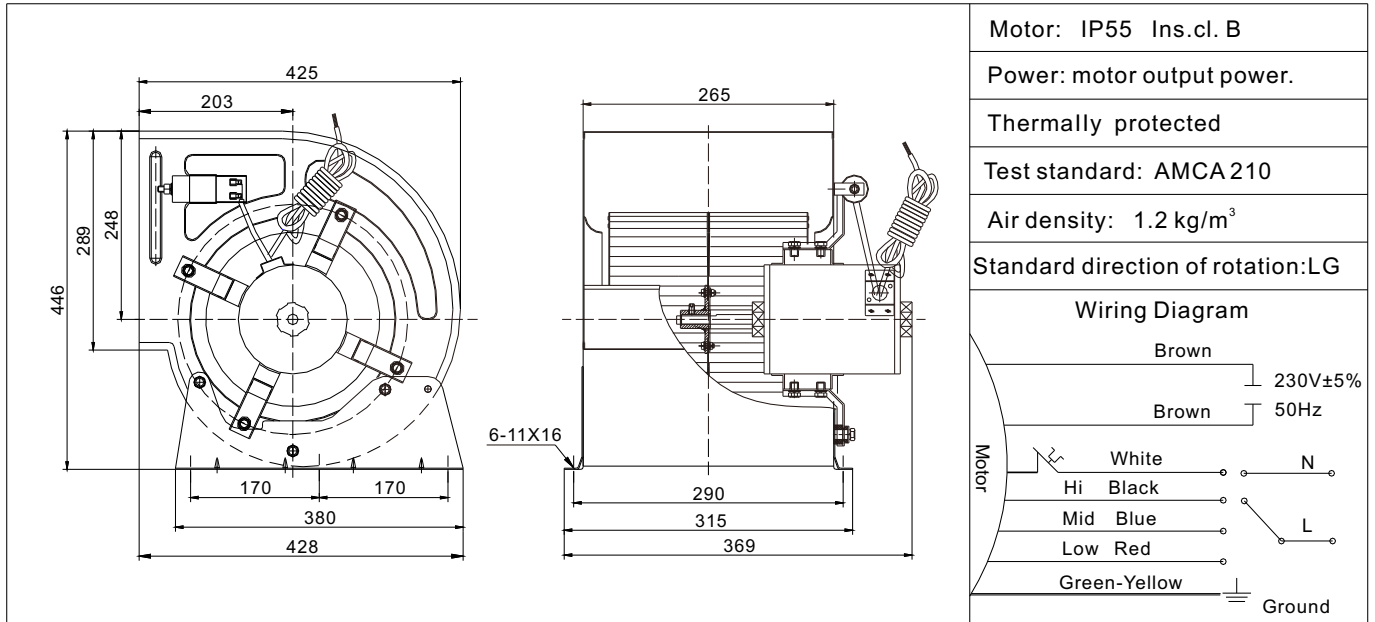


Hi. speed	Speed	1390 r/min	Power	980 W	Amp.	6.8 A
Mid. speed	Speed	1280 r/min	Power	780 W	Amp.	5.1 A
Low speed	Speed	1200 r/min	Power	700 W	Amp.	4.6 A
Capacitor		33 μ F /450V		Voltage	230V \pm 5% / 50Hz	
			Weight	20.5 kg		

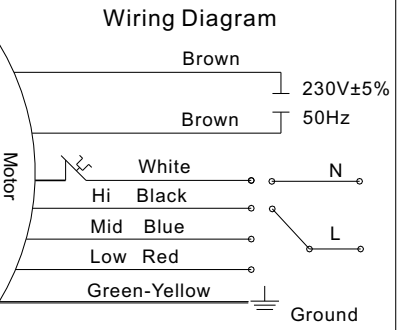




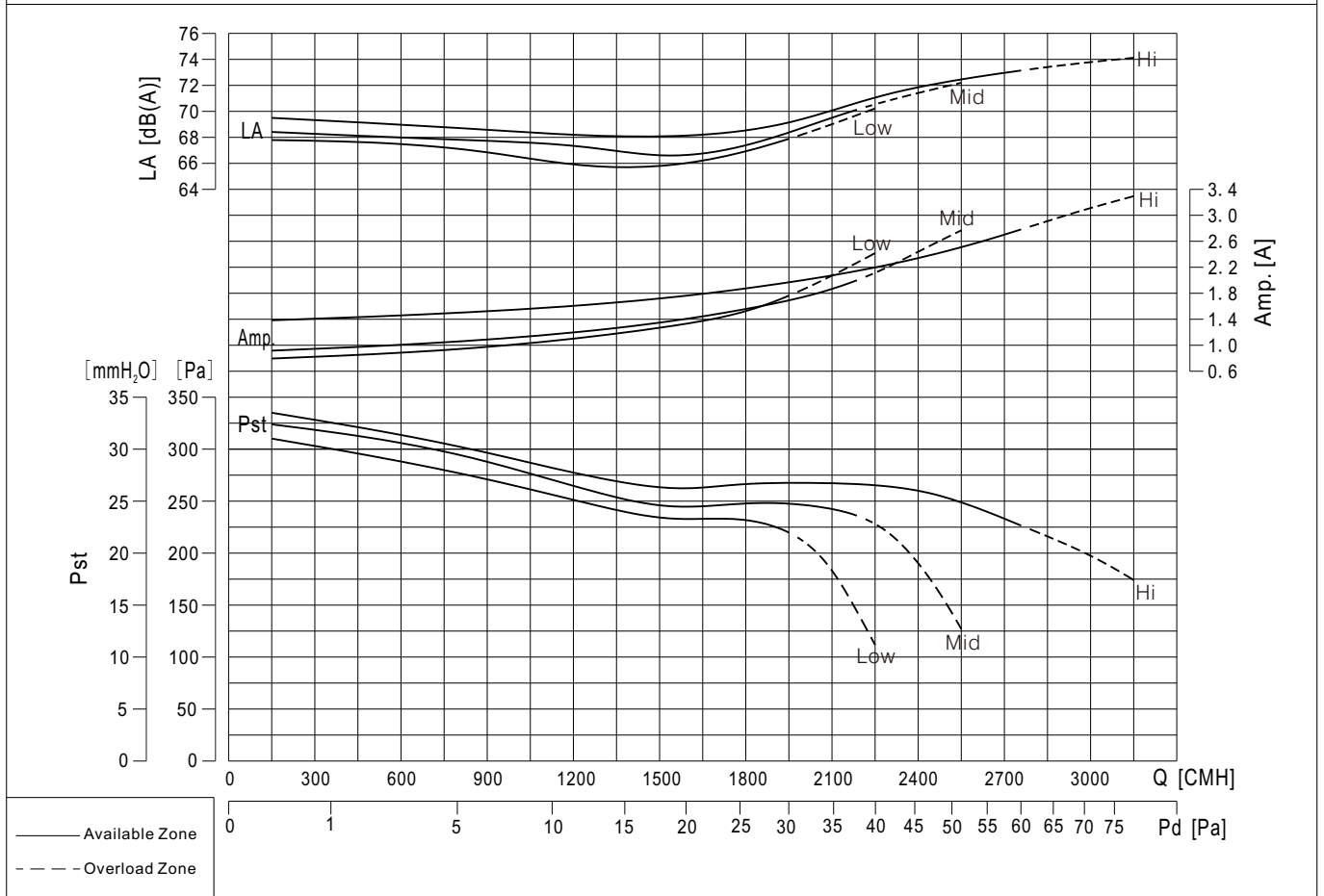
MTK10-8-D63



Motor: IP55 Ins.cl. B
 Power: motor output power.
 Thermally protected
 Test standard: AMCA 210
 Air density: 1.2 kg/m³
 Standard direction of rotation: LG



Hi. speed	Speed 880 r/min	Power 400 W	Amp. 2.6 A
Mid. speed	Speed 830 r/min	Power 280 W	Amp. 1.9 A
Low speed	Speed 750 r/min	Power 210 W	Amp. 1.6 A
Capacitor 12μF /450V		Voltage 230V±5% / 50Hz	Weight 16.5 kg

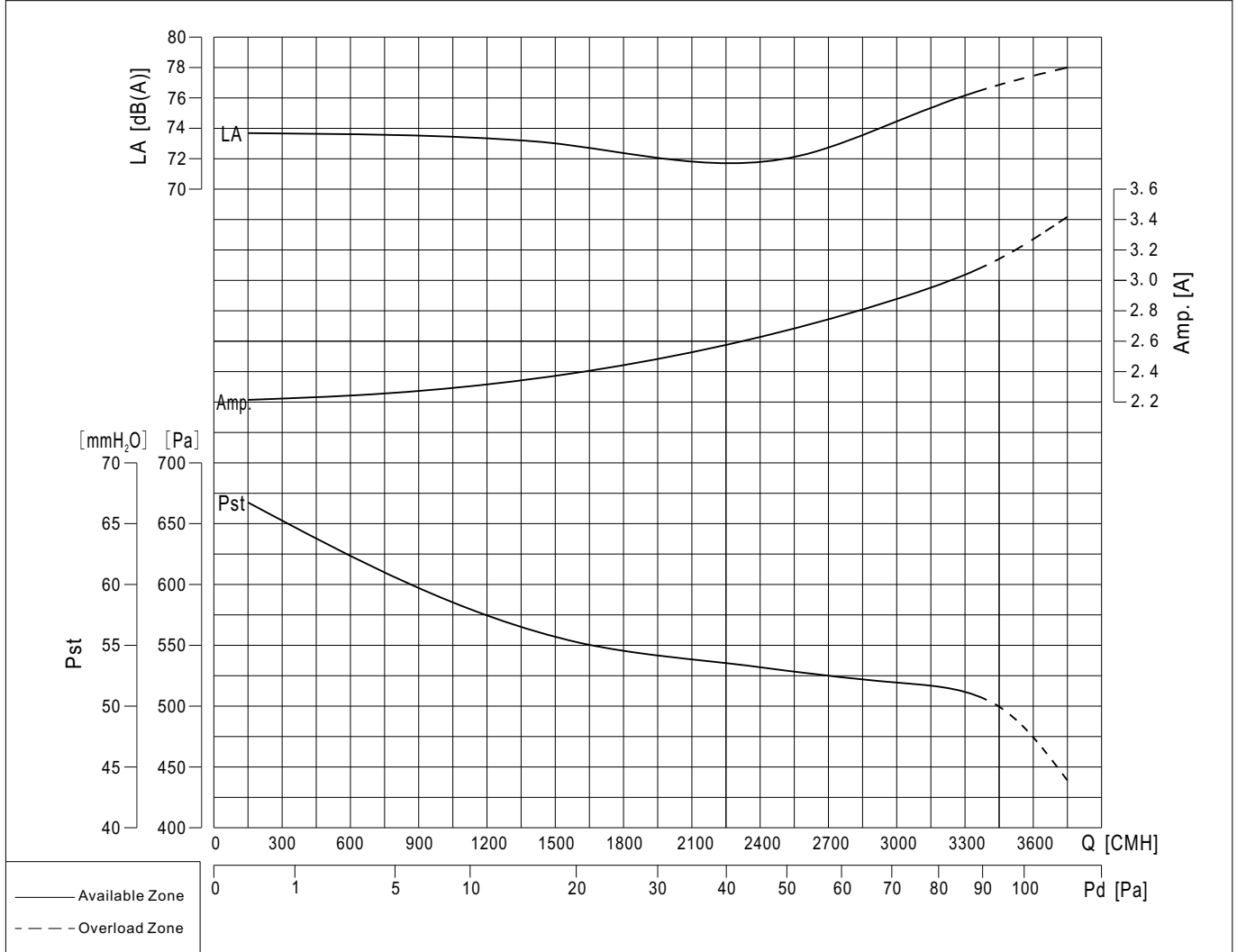


MTK10-8-S41

	Motor: IP55 Ins.cl. B
	Power: motor output power.
	Test standard: AMCA 210
	Air density: 1.2 kg/m ³
	Standard direction of rotation: LG
	<p>Wiring Diagram</p>

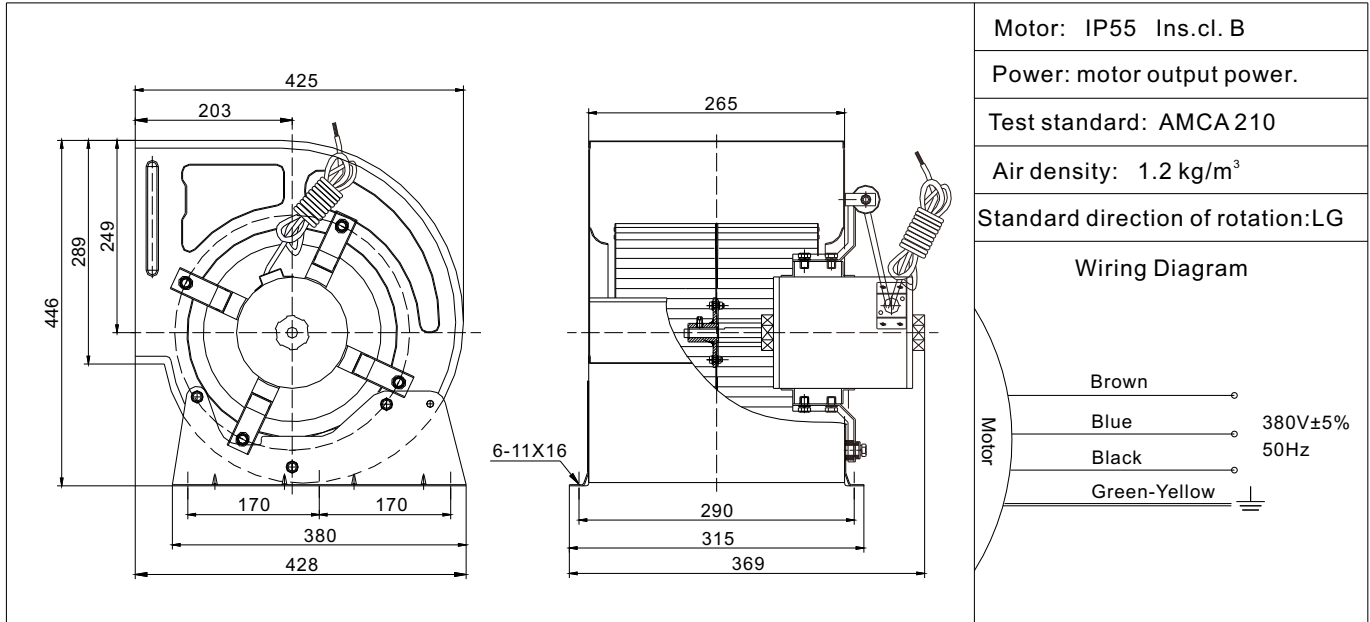
Speed	1330 r/min	Power	1080 W	Amp.	3.1A
-------	------------	-------	--------	------	------

Voltage	380V±5% / 50Hz	Weight	20.5 kg
---------	----------------	--------	---------



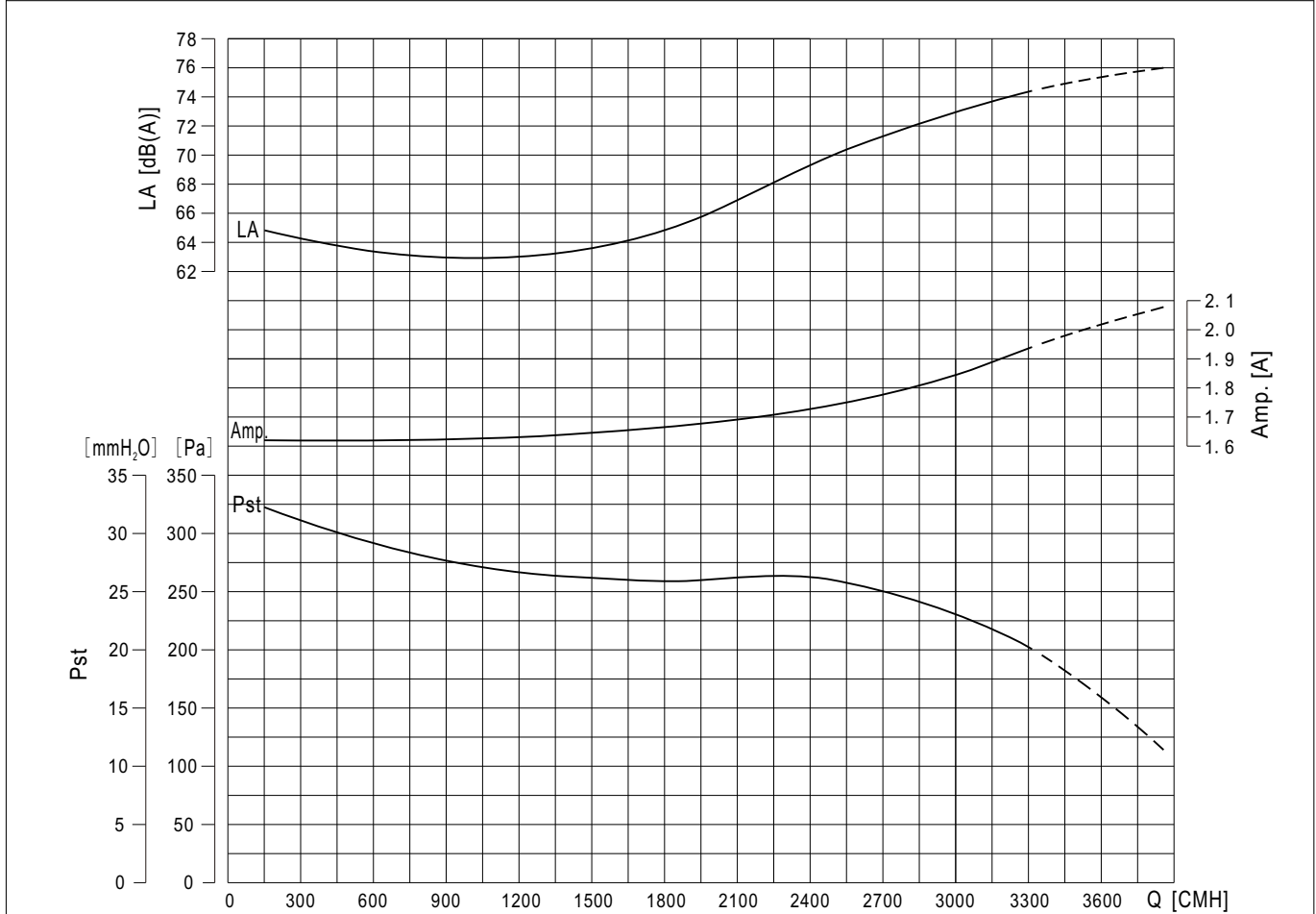


MTK10-8-S61



Speed	890 r/min	Power	450 W	Amp.	1.9 A
-------	-----------	-------	-------	------	-------

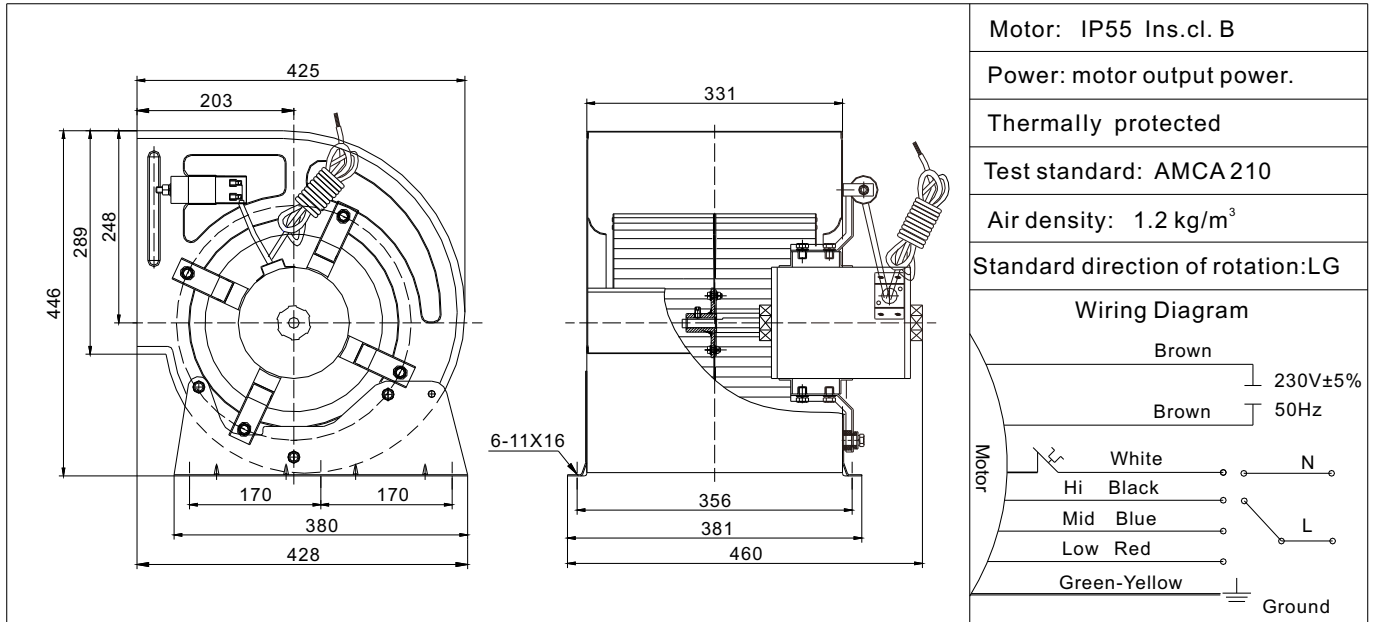
Voltage	380V±5% / 50Hz	Weight	16.5 kg
---------	----------------	--------	---------



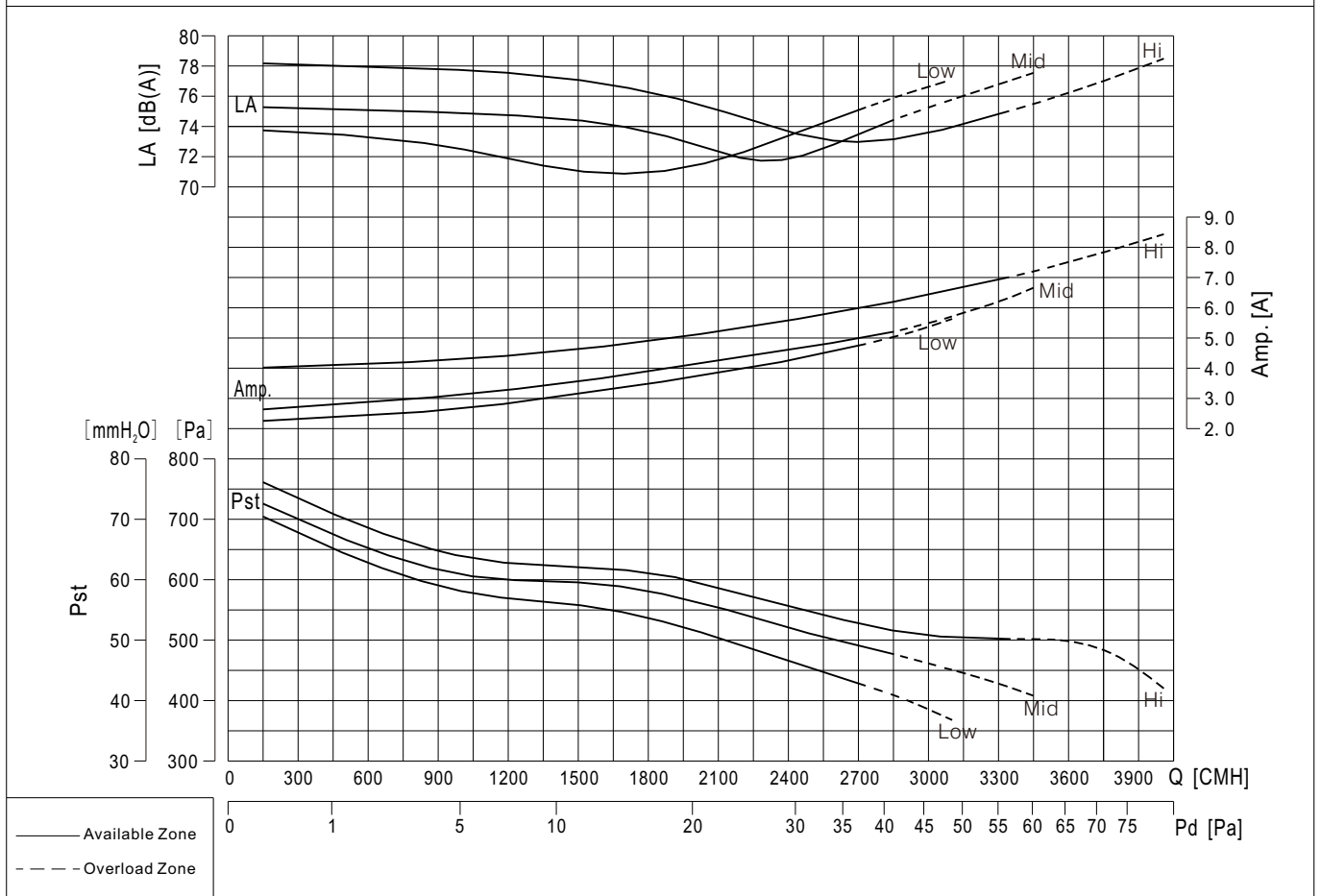
Available Zone	0	1	5	10	20	30	40	50	60	70	80	90	100	Pd [Pa]
Overload Zone														

MTK Series

MTK10-10-D43

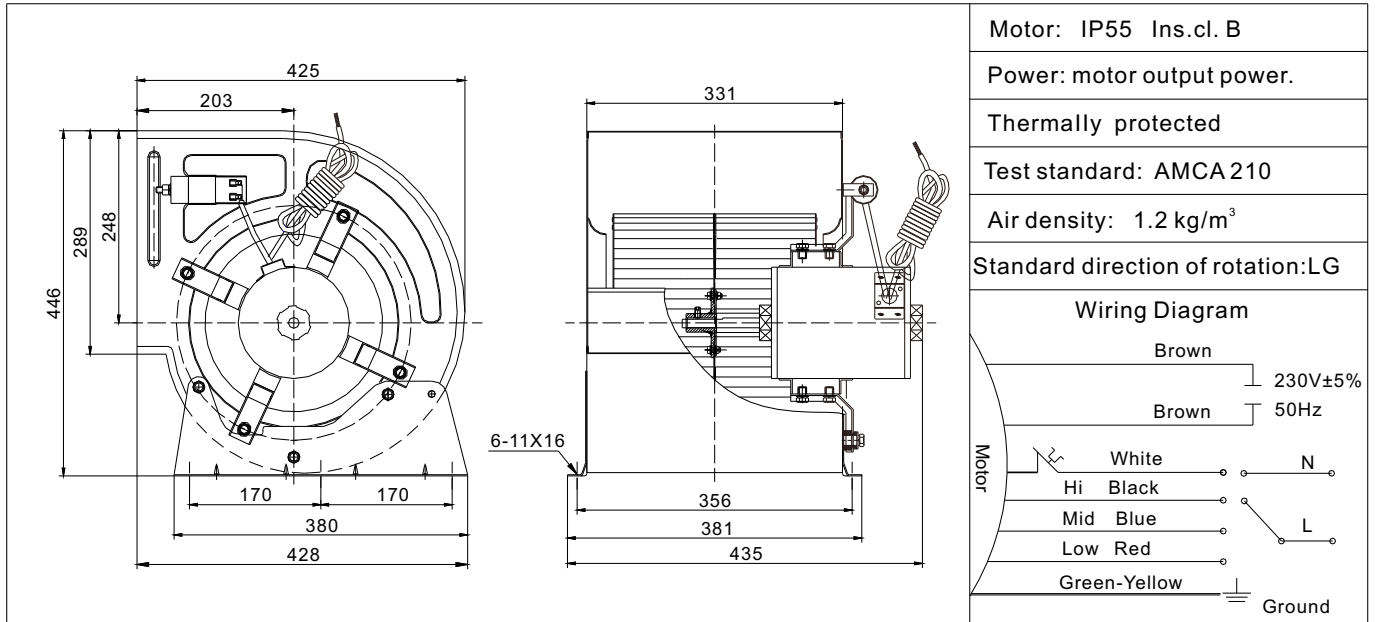


Hi. speed	Speed	1380 r/min	Power	1100 W	Amp.	7.0 A
Mid. speed	Speed	1260 r/min	Power	850 W	Amp.	5.2 A
Low speed	Speed	1180 r/min	Power	780 W	Amp.	4.8 A
Capacitor		33 μ F /450V		Voltage	230V \pm 5% / 50Hz	
				Weight	22.5 kg	

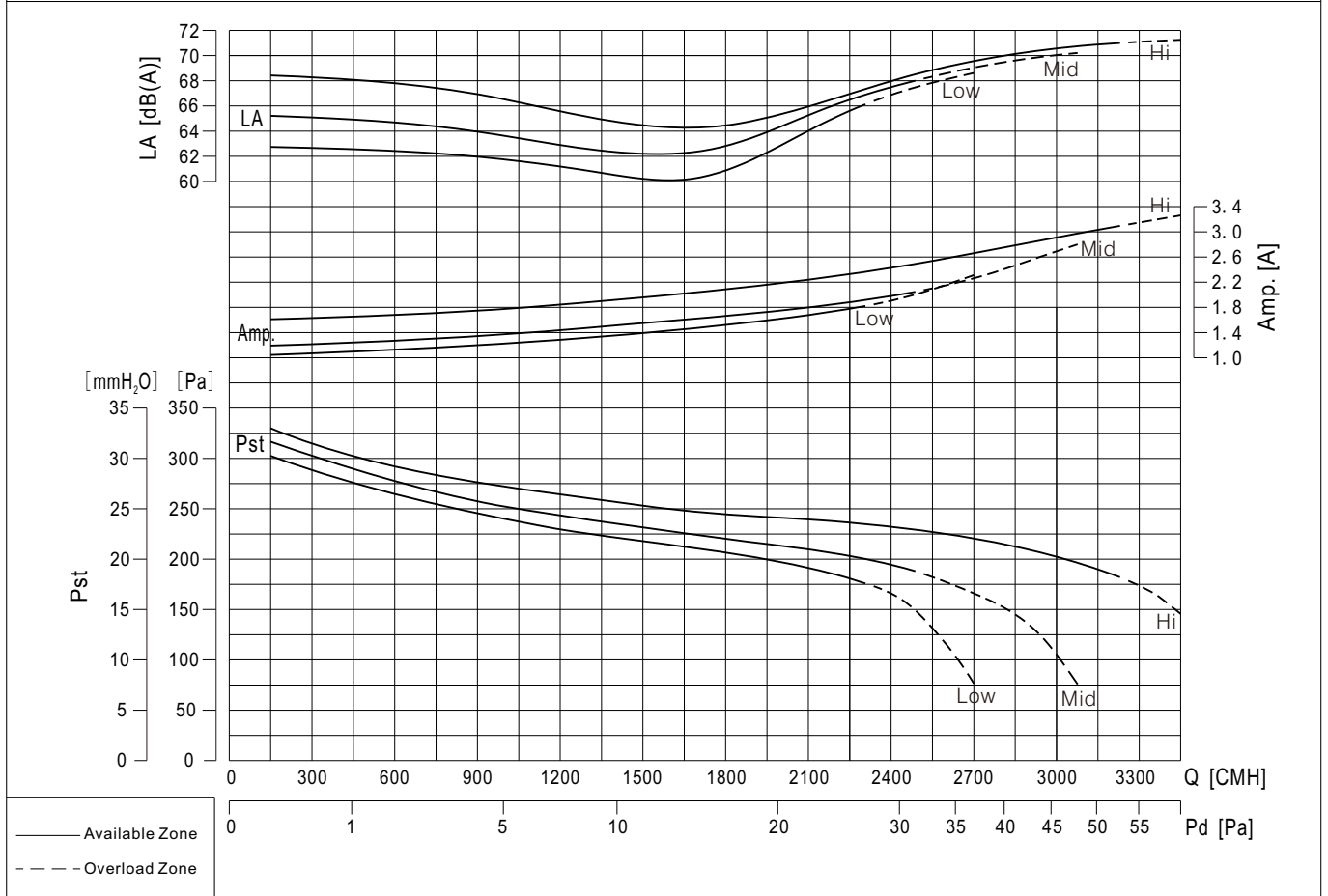




MTK10-10-D63



Hi. speed	Speed	890 r/min	Power	450 W	Amp.	3.0 A	
Mid. speed	Speed	820 r/min	Power	330 W	Amp.	2.0 A	
Low speed	Speed	740 r/min	Power	250 W	Amp.	1.7 A	
Capacitor		16 μ F /450V	Voltage		230V \pm 5% / 50Hz	Weight	20 kg



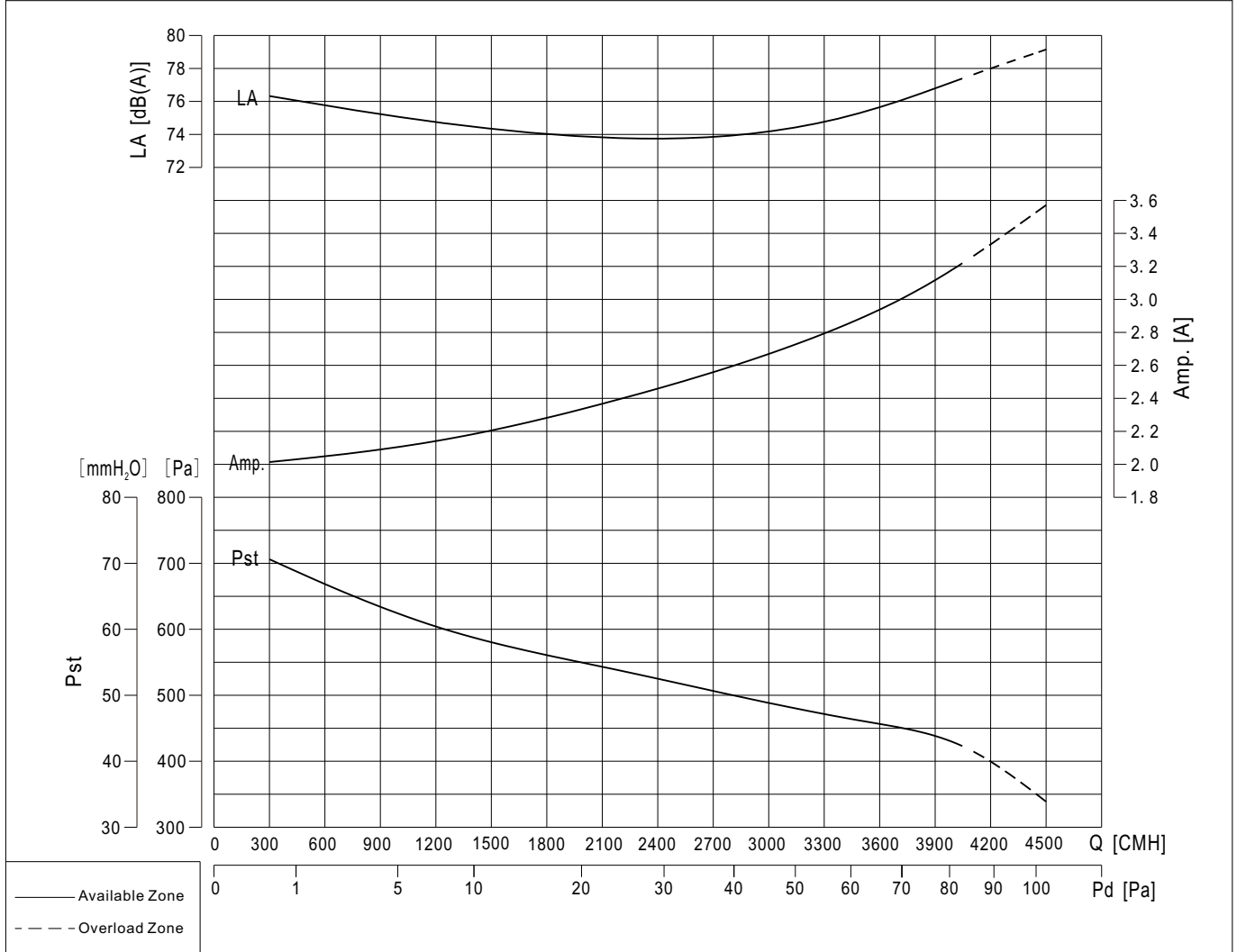
MTK Series

MTK10-10-S41

	Motor: IP55 Ins.cl. B Power: motor output power. Test standard: AMCA 210 Air density: 1.2 kg/m ³ Standard direction of rotation: LG
	Wiring Diagram

Speed	1360 r/min	Power	1150 W	Amp.	3.2 A
-------	------------	-------	--------	------	-------

Voltage	380V±5% / 50Hz	Weight	22.5 kg
---------	----------------	--------	---------



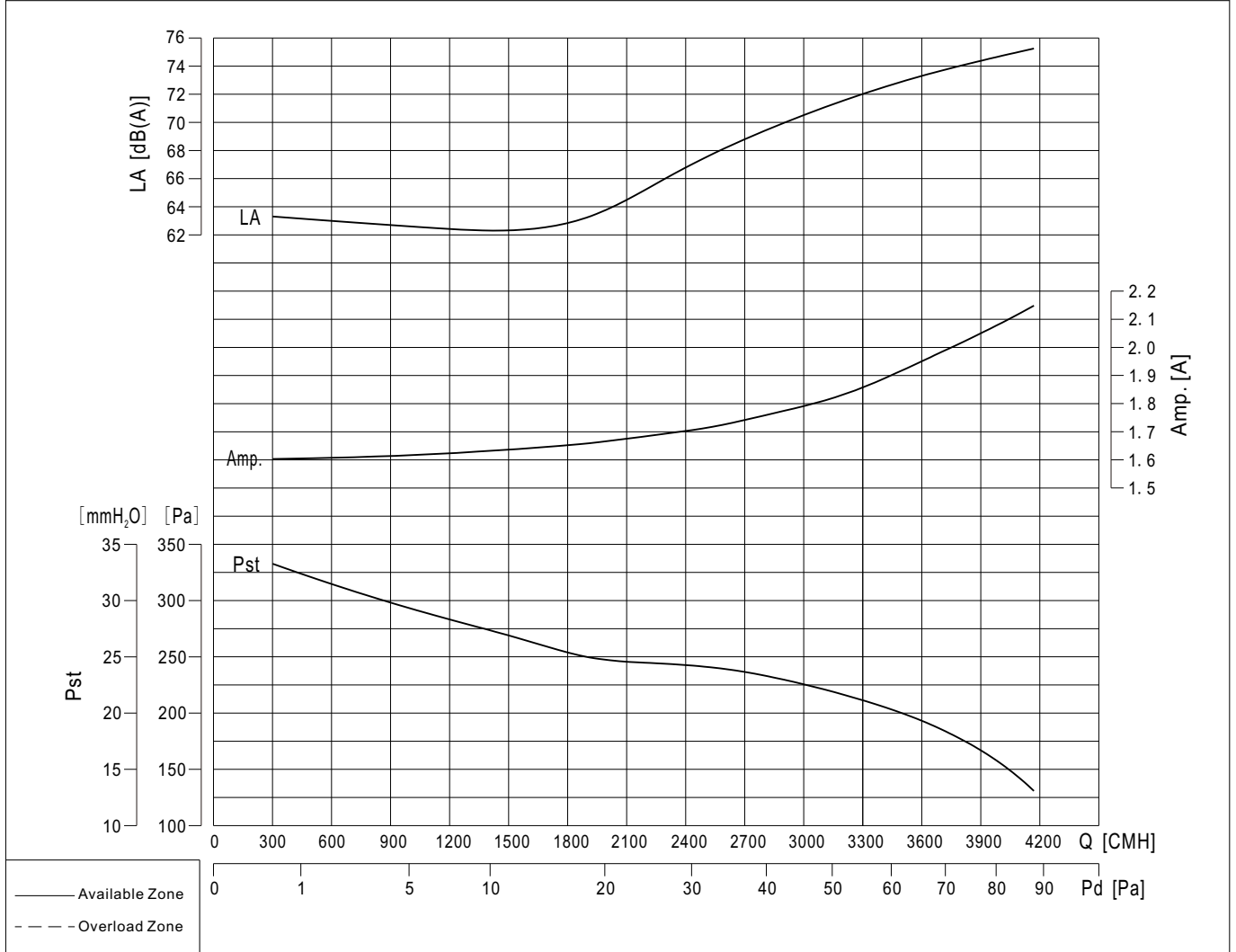


MTK10-10-S61

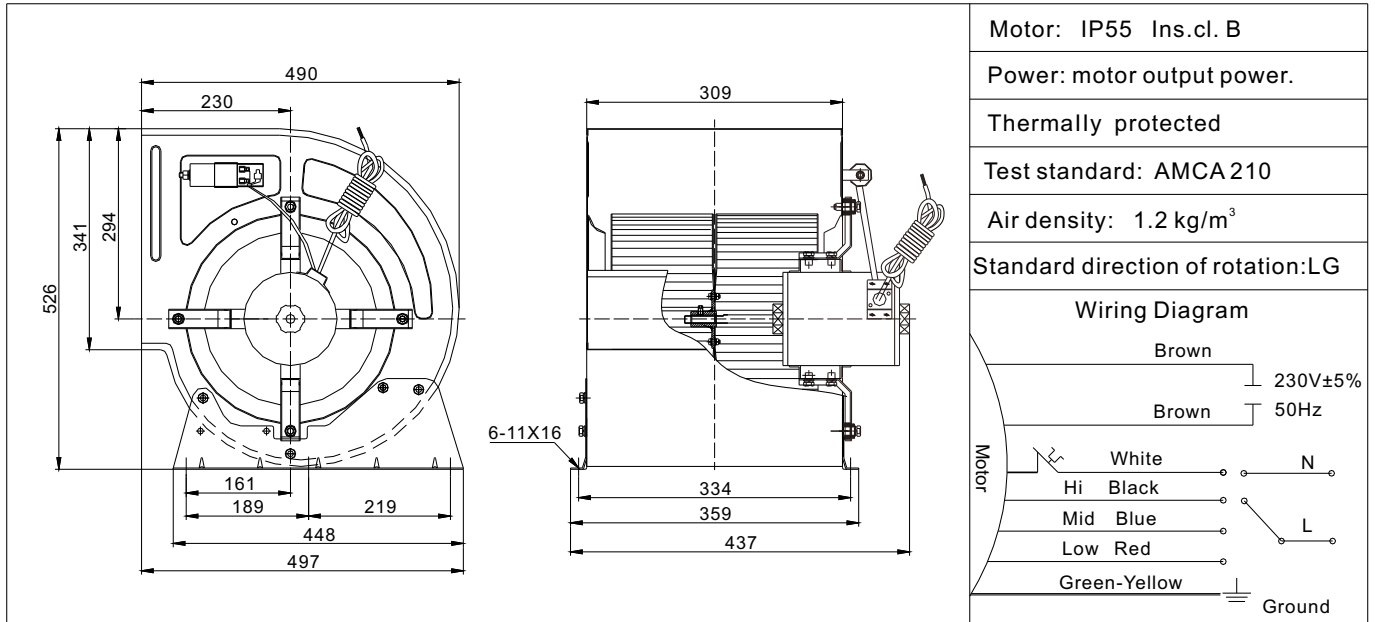
	Motor: IP55 Ins.cl. B
	Power: motor output power.
	Test standard: AMCA 210
	Air density: 1.2 kg/m ³
	Standard direction of rotation: LG
	<p>Wiring Diagram</p>

Speed	880 r/min	Power	500 W	Amp.	2.1 A
-------	-----------	-------	-------	------	-------

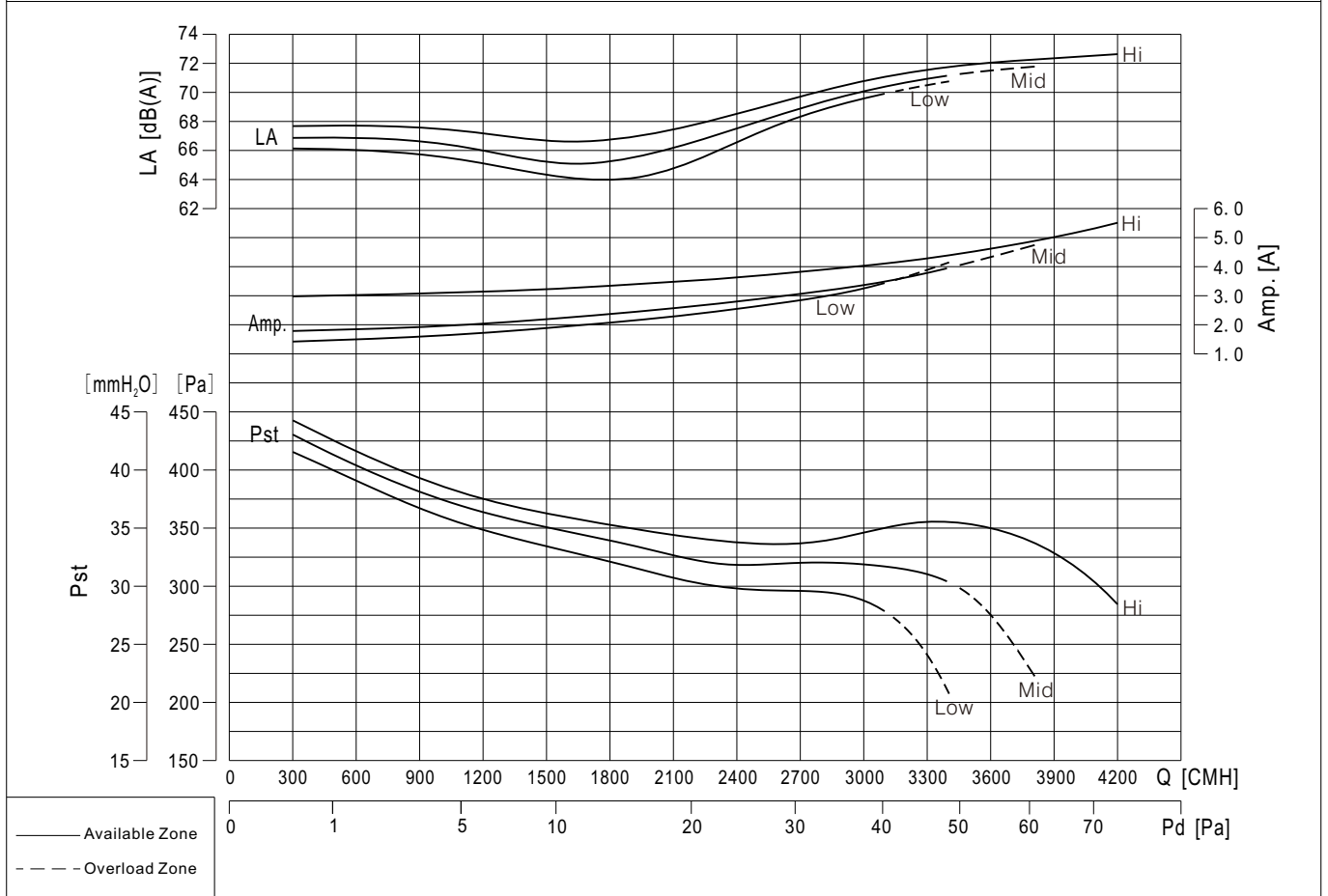
Voltage	380V±5% / 50Hz	Weight	20 kg
---------	----------------	--------	-------



MTK12-9-D63



Hi. speed	Speed 900 r/min	Power 700 W	Amp. 5.5 A
Mid. speed	Speed 840 r/min	Power 450 W	Amp. 3.9 A
Low speed	Speed 780 r/min	Power 400 W	Amp. 3.4 A
Capacitor 22 μ F /450V		Voltage 230V \pm 5% / 50Hz	Weight 26.5 kg



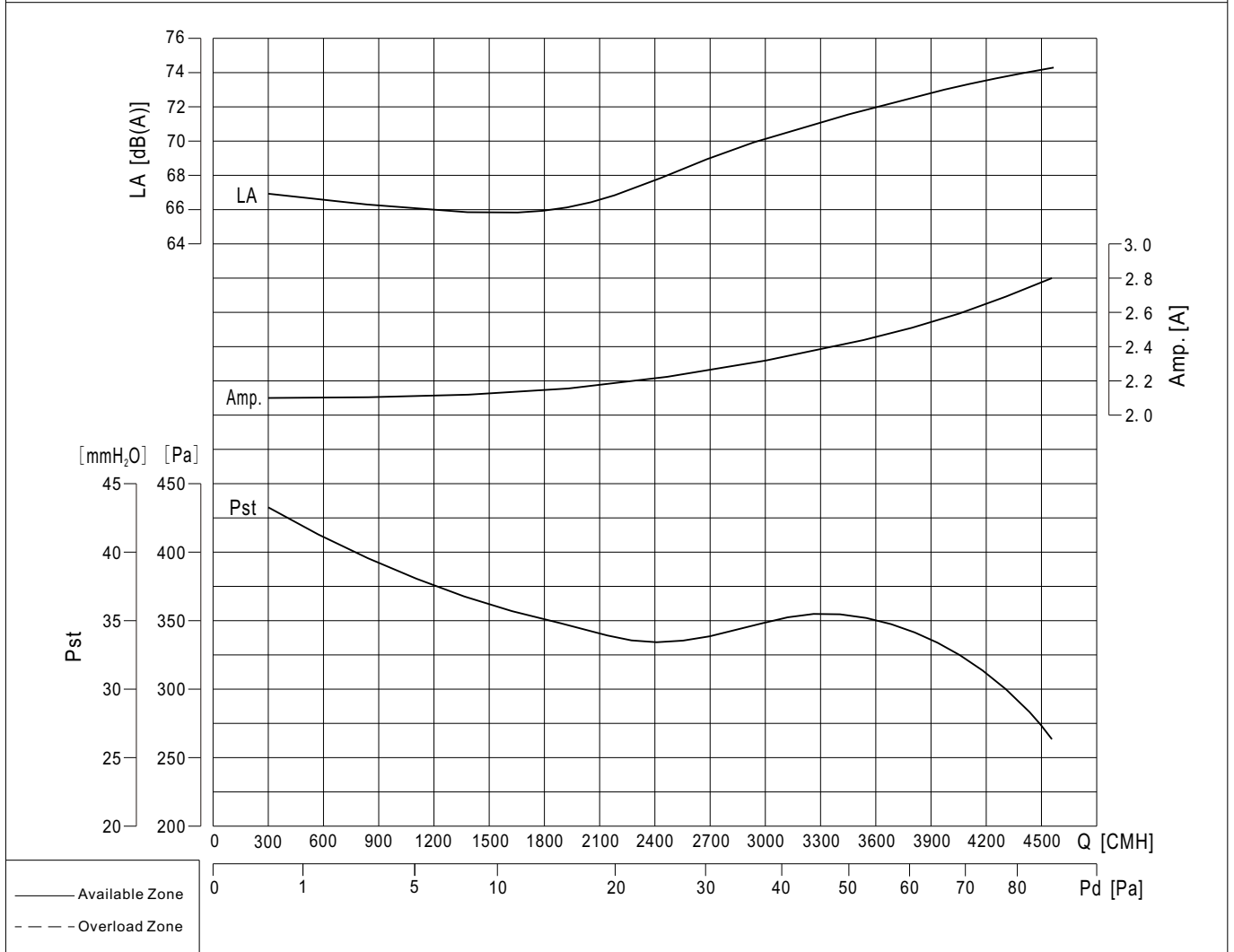


MTK12-9-S61

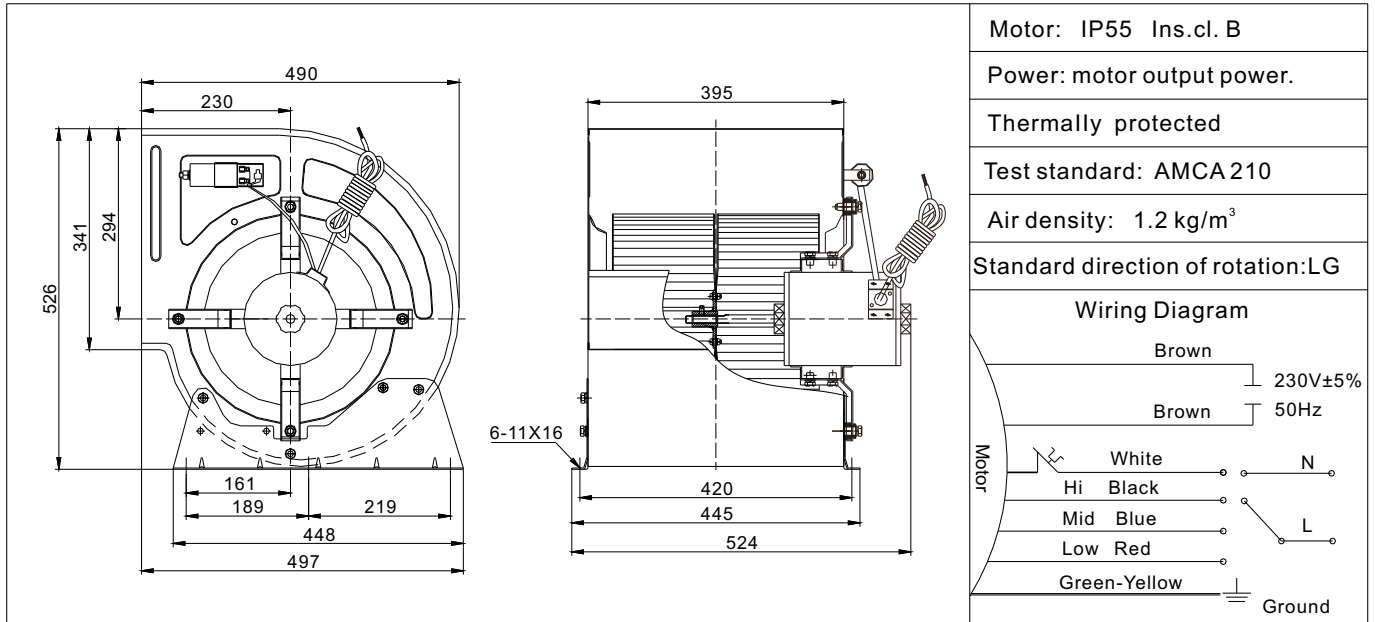
	Motor: IP55 Ins.cl. B
	Power: motor output power.
	Test standard: AMCA 210
	Air density: 1.2 kg/m ³
	Standard direction of rotation: LG
	<p>Wiring Diagram</p>

Speed	890 r/min	Power	780 W	Amp.	2.7A
-------	-----------	-------	-------	------	------

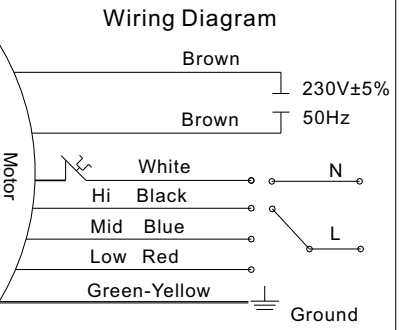
Voltage	380V±5% / 50Hz	Weight	25.5 kg
---------	----------------	--------	---------



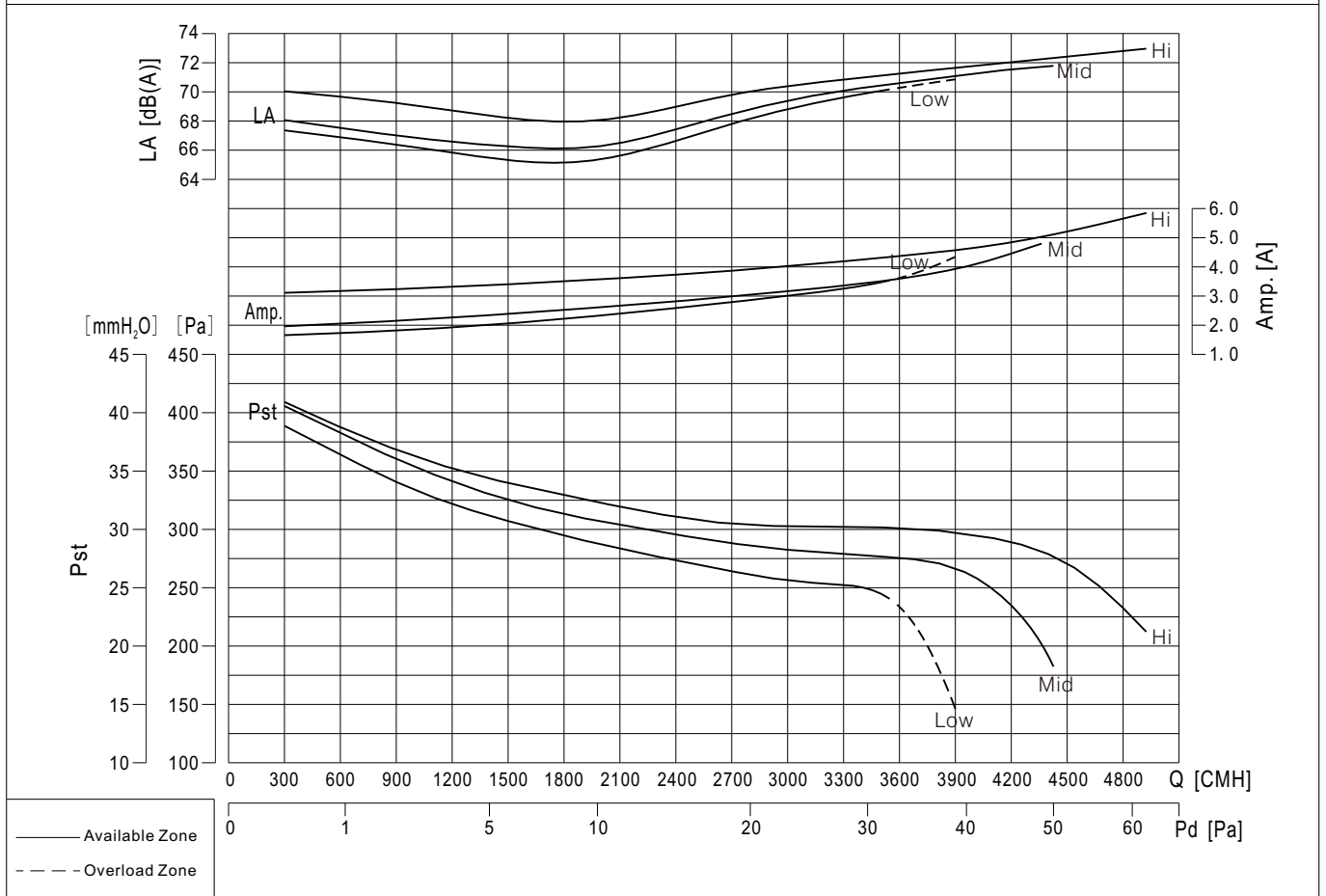
MTK12-12-D63



Motor: IP55 Ins.cl. B
 Power: motor output power.
 Thermally protected
 Test standard: AMCA 210
 Air density: 1.2 kg/m³
 Standard direction of rotation: LG



Hi. speed	Speed 890 r/min	Power 750 W	Amp. 5.8 A
Mid. speed	Speed 820 r/min	Power 500 W	Amp. 4.8 A
Low speed	Speed 760 r/min	Power 420 W	Amp. 3.5 A
Capacitor 24μF /450V		Voltage 230V±5% / 50Hz	Weight 28.5 kg



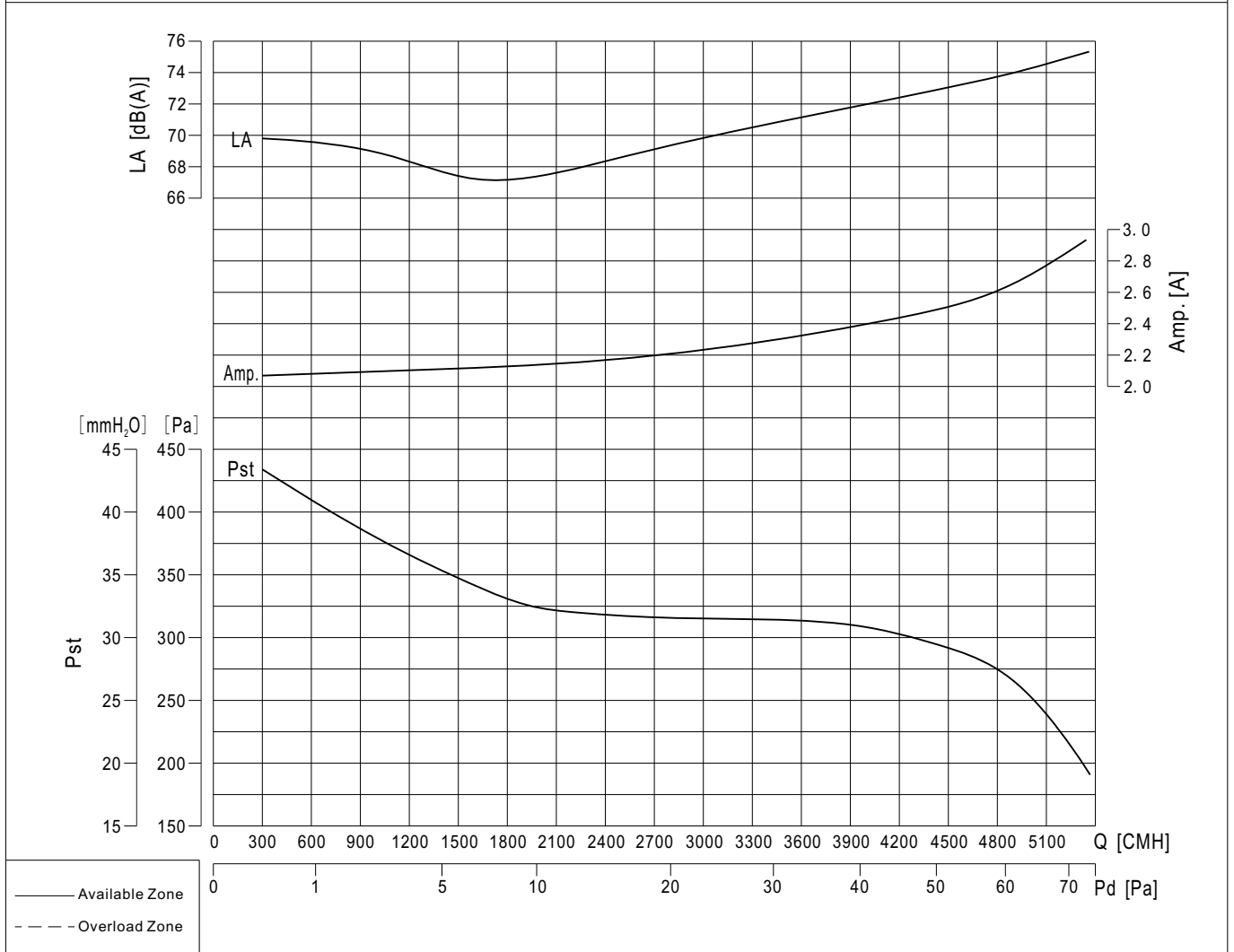


MTK12-12-S61

	Motor: IP55 Ins.cl. B
	Power: motor output power.
	Test standard: AMCA 210
	Air density: 1.2 kg/m ³
	Standard direction of rotation: LG
	<p>Wiring Diagram</p>

Speed	880 r/min	Power	850 W	Amp.	3.0 A
-------	-----------	-------	-------	------	-------

Voltage	380V±5% / 50Hz	Weight	27.5 kg
---------	----------------	--------	---------

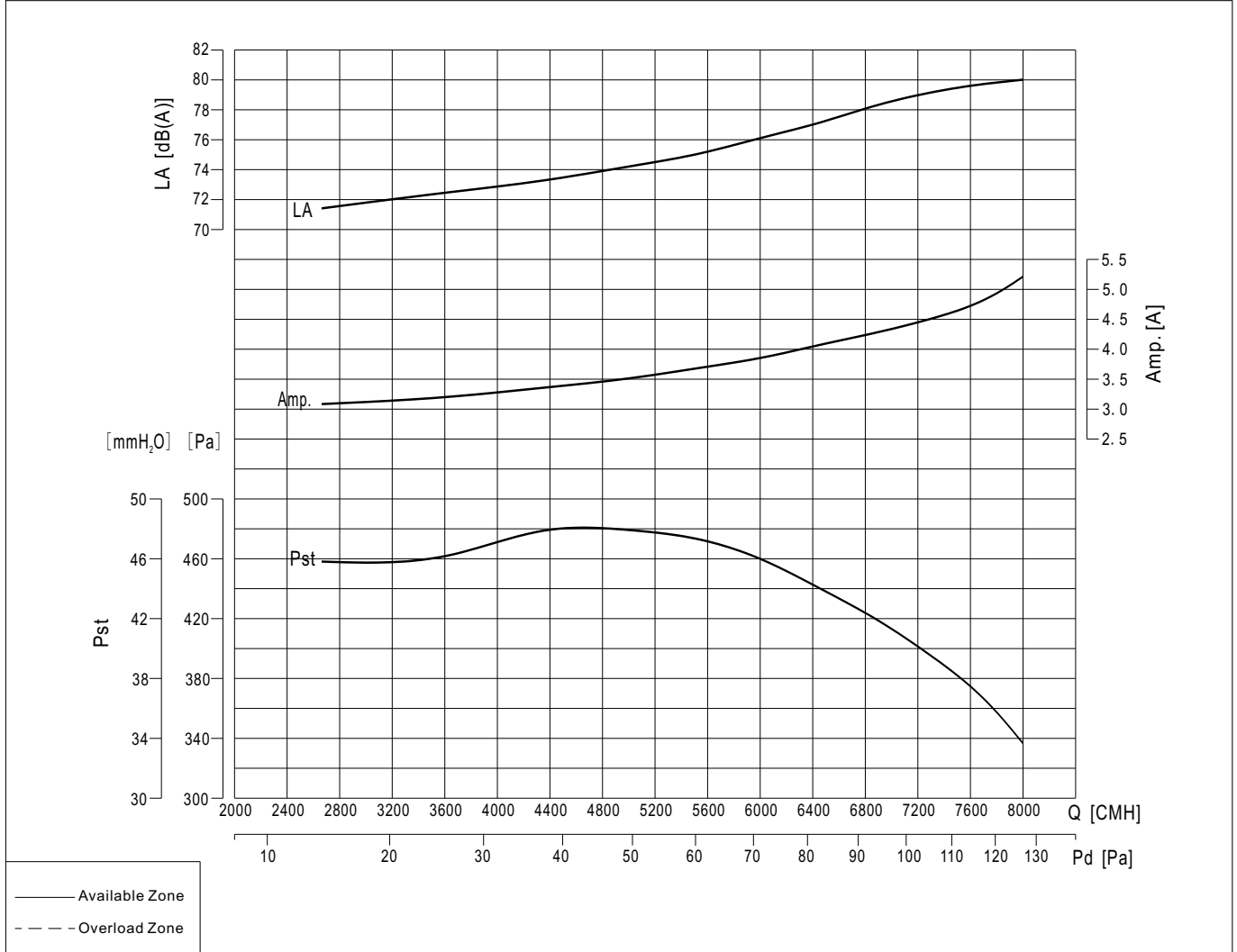


MTK15-11-S61

	Motor: IP55 Ins.cl. F
	Power: motor output power.
	Test standard: AMCA 210
	Air density: 1.2 kg/m ³
	Standard direction of rotation: LG
	<p>Wiring Diagram</p>

Speed	940 r/min	Power	2200 W	Amp.	5.3 A
-------	-----------	-------	--------	------	-------

Voltage	380V±5% / 50Hz	Weight	72 kg
---------	----------------	--------	-------





MTK15-15-S61

	Motor: IP55 Ins.cl. F
	Power: motor output power.
	Test standard: AMCA 210
	Air density: 1.2 kg/m ³
	Standard direction of rotation: LG
Wiring Diagram	

Speed	940 r/min	Power	2200 W	Amp.	5.3 A
-------	-----------	-------	--------	------	-------

Voltage	380V±5% / 50Hz	Weight	81 kg
---------	----------------	--------	-------

